

FINAL MINUTES
Milk Commission Meeting Held December 13, 2018

Minutes of the meeting of the Milk Commission, held at the Department of Agriculture and Consumer Services at 102 Governor Street, Richmond VA 23219

THE COMMISSION:

PRESENT: Gerald Heatwole, Chairperson; Carolyn Carlson, Commissioner; Jessica Jones, Commissioner; James Kerr, Commissioner; Rodrigo Velasquez, Commissioner

ABSENT:

Bruce Mayer; Commissioner

STAFF PRESENT:

Dr. Jewel Bronaugh, Commissioner of Agriculture; Diane Beck, Dairy Auditor; Robert Farrier, Dairy Auditor; Monique Hutton, Dairy Auditor; Crafton Wilkes, Administrator.

Dr. Bronaugh provided an introduction to those in attendance and reviewed some of the more positive points for dairy farmers and consumers in the recently approved Farm Bill.

Mr. Heatwole called the meeting to order at 2:05 p.m.

Mr. Heatwole asked for a motion to accept the minutes from the previous meeting. Mr. Kerr so moved and Ms. Carlson seconded the motion. The minutes were accepted as presented at the meeting. Two recently appointed members, Dr. Jessica Jones and Mr. Rodrigo Velasquez introduced themselves to the group.

Mr. Wilkes gave a review of Class I and Class II sales and pricing. Producer prices are forecasted to improve in 2019, with prices anticipated to average \$1.20 higher than 2018. He touched on some of the events that have lowered producer prices both nationally and in Virginia. Mr. Heatwole offered additional perspective about pricing, and he believed that recent trends indicate that there is reason to believe that prices should start to improve for farmers. He pointed specifically to the distances milk traveled from the farm to processing facilities. The USDA AMS estimates on its *Estimated Fluid Milk Products Sales Report* that milk sales in the United States had declined 2.2% through October 2018; Virginia follows the same trajectory for the year. However, retail sales in the Eastern and Western Markets showed slight increases in sales for October. Mr. Wilkes could not point to a specific event that caused the increase, but believes that it is a result of retail stability rather than higher consumption.

Mr. Wilkes reviewed the Presumed Delivery Cost Percentage, which the Commission is required to consider each December per 2VAC 15-20-100 3 G (2). The possible impact the increase in delivery percentage would have on consumers was discussed among board members. At the request of Mr. Michael Myatt, representing Cooperative Milk Producers Association (CMPA), Mr. Wilkes noted that Milk Commission regulations minimize any increase in retail price for most milk consumers, so the impact would be limited. He also noted that the number of cases per delivery in the smaller tiers would change once the request to amend those categories had been reviewed by the Attorney General's Office and the Department of Planning and Budget. Although there is no time frame for the change, it is expected to occur in 2019 and would amend the cases required per delivery to be 0-6 and 7-99. Mr. Heatwole asked for a motion to accept the Presumed Delivery Cost Percentage as outlined in the Delivery Cost per Case Analysis documents that were presented at the meeting. Mr. Kerr so moved and Mr. Velasquez seconded the motion. The Presumed Delivery Cost Percentage was accepted as presented.

<u>Cases per Delivery</u>		<u>2018</u>	<u>Effective 2019</u>
0-13	Platform Cost x	1.4662 (46.62%)	1.5243 (52.43%)
14-99	Platform Cost x	1.2331 (23.31%)	1.2622 (26.22%)
100+	Platform Cost x	1.1260 (12.60%)	1.1417 (14.17%)

Mr. Heatwole discussed his thoughts on the current state of dairy farming. Based on his figures, he believes about 68 Grade A dairies would go out of business in 2018. Most of these are family operations that have existed for several generations, and many farmers were struggling with the loss of their way of life. He also stated that while no farmer would complain about the record high prices of 2014, he felt that they did more harm than good to the industry ultimately. Kevin Phillips, a dairy farmer from Waynesboro, echoed the hardships felt by dairy families, adding that herd expansion to take advantage of economies of scale was no longer as viable a solution as it once was.

The meeting opened for public comment. Ms. Karen Hawkins, representing DFA, and Mr. Myatt, CMPA, both expressed support for a review of the adjacent market prices, and the continued need to keep it aligned with market realities.

The next Commission meeting is tentatively scheduled for 1:30 p.m. on Wednesday, February 20, 2019 at the Virginia Department of Forestry in Charlottesville.



STATE MILK COMMISSION
Crafton O. Wilkes, Administrator

Announcement of Producer Class I Price at 3.5% Butterfat

December 2018

	OCT 2018	NOV 2018	DEC 2018
Eastern Market			
Established Price	\$8.46	\$8.46	\$8.46
Add Adjustment (per §2VAC15-20-81)	\$12.29	\$11.49	\$11.01
Eastern Market Class I Price (per cwt)	\$20.75	\$19.95	\$19.47
Eastern Market Skim Price (per cwt)	12.1345	11.2345	10.8445
Eastern Market Butterfat Price (per lb)	2.5835	2.6020	2.5728
Western Market			
Established Price	\$8.16	\$8.16	\$8.16
Add Adjustment (per §2VAC15-20-81)	\$12.39	\$11.59	\$11.11
Western Market Class I Price (per cwt)	\$20.55	\$19.75	\$19.27
Western Market Skim Price (per cwt)	11.9345	11.0345	10.6445
Western Market Butterfat Price (per lb)	2.5815	2.6000	2.5708
Southwestern Market			
Established Price	\$7.96	\$7.96	\$7.96
Add Adjustment (per §2VAC15-20-81)	\$12.10	\$11.30	\$10.82
Southwestern Market Class I Price (per cwt)	\$20.06	\$19.26	\$18.78
Southwestern Market Skim Price (per cwt)	11.4440	10.5440	10.1540
Southwestern Market Butterfat Price (per lb)	2.5766	2.5951	2.5659

Class II Price Announcement Date	OCT 31, 2018	DEC 5, 2018	JAN 3, 2019
Milk Commission Class II Price (per cwt)	\$15.54		
Milk Commission Class II Skim Price (per cwt)	\$6.8100	\$6.9600	\$7.1200
Milk Commission Class II Butterfat Price (per lb)	2.5621		

Milk Commission Bi-Monthly Composite Index	324.2	326.6	329.2
Milk Commission Assessment Rate (per cwt)	0.03950	0.03950	0.03950
Federal Order Base Class I Price (per cwt)	\$16.33	\$15.52	\$15.05

Price Change from November 2018

	Class I (cwt)	Skim (cwt)	Butterfat (lb)
Eastern Market	▼ -\$0.48	▼ -\$0.39	▼ -\$0.0292
Western Market	▼ -\$0.48	▼ -\$0.39	▼ -\$0.0292
Southwestern Market	▼ -\$0.48	▼ -\$0.39	▼ -\$0.0292

Next Class I Announcement: Dec. 19, 2018

Next Class II Announcement: Dec. 5, 2018

Virginia Department of Agriculture and Consumer Services
State Milk Commission

Announcement of Producer Class I Price at 3.5% Butterfat

December 2018

Virginia State Milk Commission Skim and Butterfat Prices, 2018

Month	Eastern Market		Western Market		Southwestern Market		Bi-Monthly Index
	Skim per cwt	Butterfat per pound	Skim per cwt	Butterfat per pound	Skim per cwt	Butterfat per pound	
January	11.8555	2.5363	11.6555	2.5343	11.0495	2.5282	329.7
February	10.5855	2.5464	10.3855	2.5444	9.7795	2.5383	325.5
March	9.7680	2.3773	9.5680	2.3753	9.0950	2.3706	322.0
April	10.2080	2.4690	10.0080	2.4670	9.5350	2.4623	320.8
May	10.3680	2.5216	10.1680	2.5196	9.6950	2.5149	323.3
June	10.7380	2.6513	10.5380	2.6493	10.0650	2.6446	327.2
July	10.6380	2.7080	10.4380	2.7060	9.9650	2.7013	330.1
August	9.8480	2.5802	9.6480	2.5782	9.1750	2.5735	329.6
September	10.3445	2.6560	10.1445	2.6540	9.6540	2.6491	326.0
October	12.1345	2.5835	11.9345	2.5815	11.4440	2.5766	324.2
November	11.2345	2.6020	11.0345	2.6000	10.5440	2.5951	326.6
December	10.8445	2.5728	10.6445	2.5708	10.1540	2.5659	329.2
AVERAGE	10.7139	2.5670	10.5139	2.5650	10.0129	2.5600	326.2

Virginia State Milk Commission Skim and Butterfat Prices, 2017

Month	Eastern Market		Western Market		Southwestern Market		Bi-Monthly Index
	Skim per cwt	Butterfat per pound	Skim per cwt	Butterfat per pound	Skim per cwt	Butterfat per pound	
January	15.7095	2.3984	15.5095	2.3964	14.7350	2.3887	329.2
February	14.3150	2.5804	14.1150	2.5784	13.3250	2.5705	330.8
March	14.7595	2.5039	14.5595	2.5019	13.7750	2.4941	332.1
April	13.8595	2.5094	13.6595	2.5074	12.8750	2.4996	333.1
May	13.2495	2.4347	13.0495	2.4327	12.2650	2.4249	335.0
June	13.4495	2.4103	13.2495	2.4083	12.4650	2.4005	336.3
July	12.1955	2.7700	11.9955	2.7680	11.3895	2.7619	335.2
August	11.4255	3.0207	11.2255	3.0187	10.6195	3.0126	335.1
September	11.2055	3.0779	11.0055	3.0759	10.3995	3.0698	335.5
October	11.5455	2.9068	11.3455	2.9048	10.7395	2.8987	335.1
November	12.1555	2.7292	11.9555	2.7272	11.3495	2.7211	332.7
December	13.1755	2.5823	12.9755	2.5803	12.3695	2.5742	331.6
AVERAGE	13.0871	2.6603	12.8871	2.6583	12.1923	2.6514	333.5

Prevailing Market	Bristol	Charleston	Raleigh	Winston-Salem	Washington, DC
Over Order Premium	\$0.48	\$0.39	\$0.55	\$0.55	\$0.30

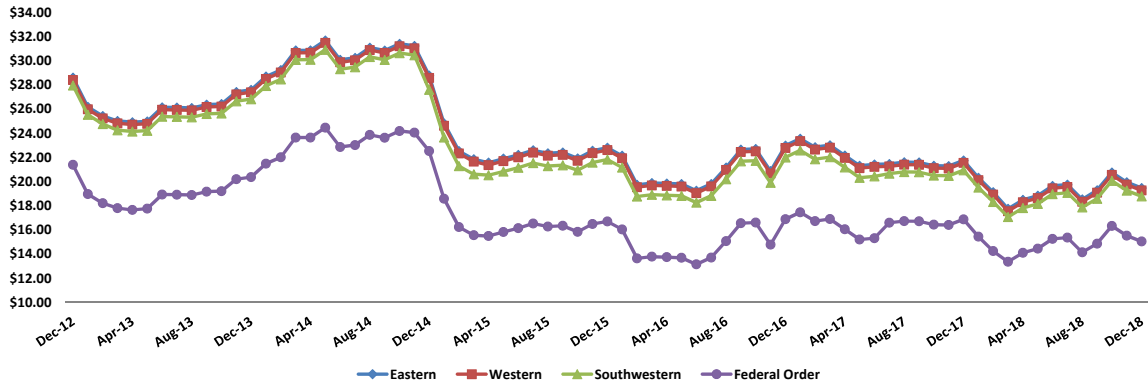
Next Class I Announcement: Dec. 19, 2018

Next Class II Announcement: Dec. 5, 2018

Virginia State Milk Commission
Class I Price Dashboard
December 2018

Months Plotted: **73**

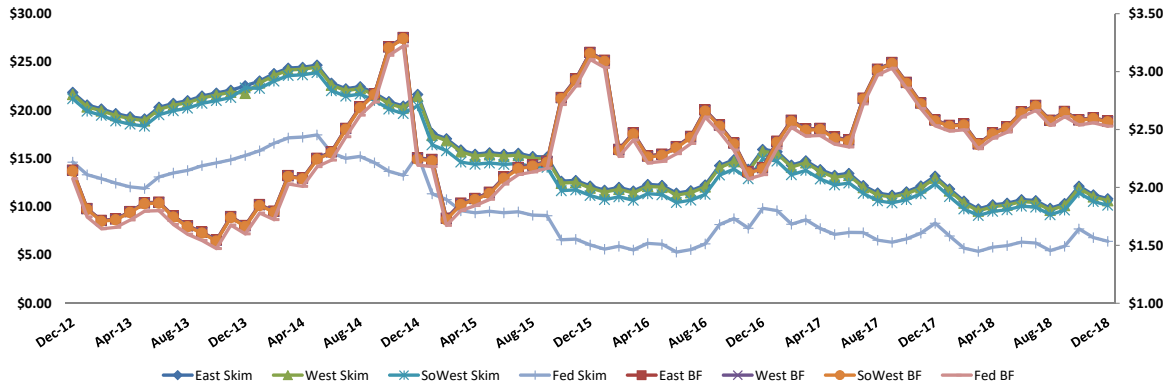
Class I Price by Market



	Class I Price (per cwt)			
	Eastern	Western	Southwestern	Federal Order*
73-Month High	\$31.69	\$31.49	\$30.92	\$24.47
73-Month Low	\$17.75	\$17.55	\$17.07	\$13.14
73-Month Avg.	\$23.59	\$23.39	\$22.72	\$17.48
Current Month	\$19.47	\$19.27	\$18.78	\$15.05

*The Federal Order Class I Price is a baseline price, and does not factor in location differentials

Class I Component Price by Market



	Class I Component Price							
	Eastern Skim (per cwt)	Eastern Butterfat (per lb)	Western Skim (per cwt)	Western Butterfat (per lb)	Southwestern Skim (per cwt)	Southwestern Butterfat (per lb)	Federal Order Skim (per cwt)	Federal Order Butterfat (per lb)
73-Month High	\$24.6700	\$3.2934	\$24.4700	\$3.2914	\$23.9000	\$3.2857	\$17.4500	\$3.2216
73-Month Low	\$9.7680	\$1.5449	\$9.5680	\$1.5429	\$9.0950	\$1.5372	\$5.3100	\$1.4727
73-Month Avg.	\$15.9354	\$2.3458	\$15.7276	\$2.3438	\$15.0784	\$2.3371	\$9.8266	\$2.2847
Current Month	\$10.8445	\$2.5728	\$10.6445	\$2.5708	\$10.1540	\$2.5659	\$6.4200	\$2.5286



STATE MILK COMMISSION
Crafton O. Wilkes, Administrator

Announcement of Producer Class II Price at 3.5% Butterfat

November 2018

	SEP 2018	OCT 2018	NOV 2018
State Milk Commission Class II Price (per cwt)	\$15.13	\$15.54	\$15.63
Class II Skim Price (per cwt)	6.4300	6.8100	6.9600
Class II Butterfat Price (per lb)	2.5512	2.5621	2.5455

November 2018 Highlights

-The Class II price for November increased over October by \$0.09 per cwt. The Class II Skim price increased by \$0.15 per cwt, and the Class II Butterfat price decreased by \$0.02 per lb.

Next Announcement: Jan. 3, 2019



STATE MILK COMMISSION
Crafton Wilkes, Administrator

Milk Market Bulletin

October 2018

Class I Sales and Allocation

Market	Monthly Sales Comparison			Annual Sales Comparison		
	Oct '18	Oct '17	Change (%)	Oct '18	Oct '17	Change (%)
East	33,725,737	32,010,706	5.36%	306,231,957	312,880,675	-2.13%
West	28,562,385	28,389,510	0.61%	269,815,509	275,067,421	-1.91%
Southwest	4,083,808	4,183,801	-2.39%	38,497,963	40,545,890	-5.05%
TOTAL	66,371,930	64,584,017	2.77%	614,545,429	628,493,986	-2.22%

Order	Base Assigned (000s pounds)	Class I Allocation (000s pounds)
Federal Order 1	13,314	11,685
Federal Order 5	53,807	43,357
Federal Order - Other	2,477	2,193
Virginia	1,581	1,334
TOTAL	71,179	58,569

Producer Information

Market	Producer Price (at 3.5% butterfat)				Baseholding Producers by State	
	Aug '18	Sep '18	Oct '18	Oct '17		
Class I - East	\$18.53	\$19.28	\$20.75	\$21.32		
Class I - West	\$18.33	\$19.08	\$20.55	\$21.12	Delaware	3
Class I - Southwest	\$17.86	\$18.59	\$20.06	\$20.51	Georgia	1
Class II - All Markets	\$15.07	\$15.13	\$15.54	\$15.95	Maryland	112
Class II - Butterfat	\$2.6079	\$2.5512	\$2.5621	\$2.6716	North Carolina	1
					Pennsylvania	270
					Virginia	316
					West Virginia	8
					Wisconsin	1
					TOTAL	712

	Milk Production			
	Oct '18	Oct '17	Change	Change (%)
VA Baseholders	79,604,110	86,766,740	-7,162,630	-8.26%
VA Non-Baseholders	46,989,001	54,035,562	-7,046,561	-13.04%
Out-of-State Baseholders	111,571,632	129,417,843	-17,846,211	-13.79%
VA PRODUCTION TOTAL	126,593,111	140,802,302	-14,209,191	-10.09%
BASE PRODUCTION TOTAL	191,175,742	216,184,583	-25,008,841	-11.57%

Sales Information (all figures represent pounds sold)

Market	Whole	Red. Fat	Lowfat	Skim	Flavored		Buttermilk	Eggnog	Other ¹
					Whole	Lowfat			
East	11,101,024	11,435,566	4,219,184	2,552,950	227,002	2,093,630	192,263	112,298	1,791,820
West	9,258,135	9,244,271	3,036,283	2,022,732	456,744	2,968,043	272,911	114,214	1,189,053
Southwest	1,372,038	1,476,709	350,666	248,506	65,721	400,673	137,704	15,503	16,288
TOTAL	21,731,197	22,156,546	7,606,133	4,824,188	749,466	5,462,346	602,878	242,015	2,997,161

¹ Other category may include lactose-free, custards, or other specialty milk products designated as Class I.

**Virginia State Milk Commission
 Delivery Cost per Case Analysis
 2018 - Effective: Jan 1, 2019**

Summary	Year	Total Cases	Private Label	Net Cases	Distribution Expense	Dist. Exp. per Case	Variance (\$)	Variance (%)
	2017	2,831,594	10,002	2,821,592	\$3,253,036	\$1.152908	\$0.143687	12.4630%
	2018	2,623,542	9,577	2,613,965	\$3,389,254	\$1.296595		
	Cases per Delivery		2018 Delivery Percentage		2019 Delivery Percentage		Variance (\$)	Variance (%)
	0-13		46.62%		52.43%		0.0581	12.46%
	14-99		23.31%		26.22%		0.0291	12.46%
100+		12.60%		14.17%		0.0157	12.46%	

Eastern Market	Cases per Delivery	Product	Nov 18 Platform Cost	2018 Delivered Cost/Unit	2019 Delivered Cost/Unit	Variance (\$)
	0-13	HVD Gallon	\$2.296	\$3.366	\$3.500	\$0.133
		2% Gallon	\$2.020	\$2.962	\$3.079	\$0.117
		1% Gallon	\$1.797	\$2.635	\$2.739	\$0.104
		Skim Gallon	\$1.681	\$2.465	\$2.563	\$0.098
	14-99	HVD Gallon	\$2.296	\$2.831	\$2.898	\$0.067
		2% Gallon	\$2.020	\$2.491	\$2.550	\$0.059
		1% Gallon	\$1.797	\$2.216	\$2.268	\$0.052
		Skim Gallon	\$1.681	\$2.073	\$2.122	\$0.049
	100+	HVD Gallon	\$2.296	\$2.585	\$2.621	\$0.036
		2% Gallon	\$2.020	\$2.275	\$2.306	\$0.032
		1% Gallon	\$1.797	\$2.024	\$2.052	\$0.028
		Skim Gallon	\$1.681	\$1.893	\$1.919	\$0.026

Western Market	Cases per Delivery	Product	Nov 18 Platform Cost	2018 Delivered Cost/Unit	2019 Delivered Cost/Unit	Variance (\$)
	0-13	HVD Gallon	\$2.279	\$3.341	\$3.474	\$0.132
		2% Gallon	\$2.003	\$2.937	\$3.053	\$0.116
		1% Gallon	\$1.780	\$2.610	\$2.713	\$0.103
		Skim Gallon	\$1.664	\$2.440	\$2.536	\$0.097
	14-99	HVD Gallon	\$2.279	\$2.810	\$2.876	\$0.066
		2% Gallon	\$2.003	\$2.470	\$2.528	\$0.058
		1% Gallon	\$1.780	\$2.195	\$2.247	\$0.052
		Skim Gallon	\$1.664	\$2.052	\$2.100	\$0.048
	100+	HVD Gallon	\$2.279	\$2.566	\$2.602	\$0.036
		2% Gallon	\$2.003	\$2.255	\$2.287	\$0.031
		1% Gallon	\$1.780	\$2.004	\$2.032	\$0.028
		Skim Gallon	\$1.664	\$1.874	\$1.900	\$0.026

Southwestern Market	Cases per Delivery	Product	Nov 18 Platform Cost	2018 Delivered Cost/Unit	2019 Delivered Cost/Unit	Variance (\$)
	0-13	HVD Gallon	\$2.237	\$3.279	\$3.409	\$0.130
		2% Gallon	\$1.960	\$2.875	\$2.988	\$0.114
		1% Gallon	\$1.738	\$2.548	\$2.649	\$0.101
		Skim Gallon	\$1.622	\$2.378	\$2.472	\$0.094
	14-99	HVD Gallon	\$2.237	\$2.758	\$2.823	\$0.065
		2% Gallon	\$1.960	\$2.418	\$2.474	\$0.057
		1% Gallon	\$1.738	\$2.143	\$2.193	\$0.050
		Skim Gallon	\$1.622	\$2.000	\$2.047	\$0.047
	100+	HVD Gallon	\$2.237	\$2.518	\$2.554	\$0.035
		2% Gallon	\$1.960	\$2.208	\$2.238	\$0.031
		1% Gallon	\$1.738	\$1.957	\$1.984	\$0.027
		Skim Gallon	\$1.622	\$1.826	\$1.851	\$0.025

Virginia State Milk Commission
Base Assignment System
September 2018
CORRECTION SD-915

	DFA SE	DFA NE	MDVA	CMPA	Land O'Lakes	Cumberland Valley	Mt. Joy	Established Base Total
Established 9-month Base	28,256,946	474,960	24,136,783	15,483,068	797,108	257,104	242,529	69,648,498
Corrected 9-month Base	28,226,717	474,960	24,167,012	15,483,068	797,108	257,104	242,529	69,648,498

Order	Distributor	DFA SE	DFA NE	MDVA	CMPA	Land O'Lakes	Cumberland Valley	Mt. Joy	Total Base Assignment
5	Borden Dairy KY			513,928					513,928
33	Broughton Foods	53,231							53,231
1	Cloverland Farms Dairy			4,860,918			254,279		5,115,196
1	Crowley Foods	670,912							670,912
1	Cumberland Dairy					240,831			240,831
5	Dairy Fresh	12,684,266							12,684,266
1	Dutch Valley Foods					266,097			266,097
5	Harris Teeter				2,049,038				2,049,038
5	Homestead Creamery				384,467				384,467
1	HP Hood	884,752		884,752		281,420			2,050,924
5	Land-O-Sun Spartanburg	2,367,046							2,367,046
1	Marva Maid Landover	1,142,693		1,142,693					2,285,386
VA	Marva Maid Newport News	8,460,293		2,278,082	5,717,707				16,456,082
5	Mayfield			843,862					843,862
5	Milkco			1,840,062					1,840,062
33	Nestle	282,259							282,259
VA	Potomac Farms			375,000					375,000
7	Saputo - KY	356,805							356,805
1	Saputo - NY	314,192							314,192
33	Superior Dairy			1,655,885					1,655,885
1	Tuscan Lehigh Dairies	643,999	469,741					239,864	1,353,603
5	United Dairy			1,065,946	6,040,359				7,106,305
1	Upstate Niagara			521,667					521,667
1	Wawa Dairy			414,108					414,108
5	Westover Dairy			7,504,537					7,504,537
VA	White Wave Mt. Crawford				1,121,354				1,121,354
5	Winchester Farms	56,085							56,085
TOTAL		27,916,533	469,741	23,901,440	15,312,924	788,349	254,279	239,864	68,883,130

9-month Base Minus Total		(0)							
---------------------------------	--	------------	--	--	--	--	--	--	--

Virginia State Milk Commission
 Producer Base Transfers
 For Commission Approval: December 13, 2018

Date Received	Effective Date	Cooperative	Consigned	Action	Transfer Number	Producer Name	License Number	Previous Base		Adjusted Base	
								9-Month	3-Month	9-Month	3-Month
September 14, 2018	September 16, 2018	DFA	No	Total Transfer	0916	River Haven Farms Inc	002437	60,458	56,226	0	0
September 14, 2018	September 16, 2018	MDVA	No	Increase	0916	Mountain Hollow Dairy LLC	004560	143,554	133,505	204,012	189,731

Virginia State Milk Commission
 Base Assignment System
 October 2018

	DFA SE	DFA NE	MDVA	CMPA	Land O'Lakes	Cumberland Valley	Mt. Joy	Established Base Total
Established 9-month Base	28,196,488	474,960	24,197,241	15,483,068	797,108	257,104	242,529	69,648,498

Order	Distributor	DFA SE	DFA NE	MDVA	CMPA	Land O'Lakes	Cumberland Valley	Mt. Joy	Total Base Assignment
5	Borden Dairy KY			521,354					521,354
33	Broughton Foods	59,001							59,001
1	Cloverland Farms Dairy			4,825,840			262,755		5,088,595
1	Crowley Foods	670,213							670,213
1	Cumberland Dairy					300,297			300,297
5	Dairy Fresh	14,208,767							14,208,767
1	Dutch Valley Foods					283,264			283,264
5	Harris Teeter				2,705,057				2,705,057
5	Homestead Creamery				490,639				490,639
1	HP Hood	910,694		910,694		231,066			2,052,454
5	Land-O-Sun Spartanburg	1,333,136							1,333,136
1	Marva Maid Landover	1,574,004		4,102,279					5,676,283
VA	Marva Maid Newport News	8,537,857			4,615,402				13,153,260
5	Mayfield			903,137					903,137
5	Milkco			1,904,603					1,904,603
33	Nestle	342,191							342,191
VA	Potomac Farms			395,979					395,979
7	Saputo - KY	330,120							330,120
1	Saputo - NY	321,887							321,887
33	Superior Dairy			1,745,463					1,745,463
1	Tuscan Lehigh Dairies	467,255	485,399					247,859	1,200,513
5	United Dairy			1,204,744	6,826,881				8,031,624
1	Upstate Niagara			520,455					520,455
1	Wawa Dairy			414,751					414,751
5	Westover Dairy			7,279,749					7,279,749
VA	White Wave Mt. Crawford				1,185,376				1,185,376
5	Winchester Farms	61,065							61,065
TOTAL		28,816,191	485,399	24,729,048	15,823,355	814,627	262,755	247,859	71,179,234

9-month Base Minus Total	0	(0)	(0)	(0)
---------------------------------	----------	------------	------------	------------

Virginia State Milk Commission
Base Assignment System
October 2018
CORRECTION SD 1026

	DFA SE	DFA NE	MDVA	CMPA	Land O'Lakes	Cumberland Valley	Mt. Joy	Established Base Total
Established 9-month Base	28,196,488	474,960	24,197,241	15,483,068	797,108	257,104	242,529	69,648,498
Corrected 9-month Base	28,196,488	474,960	24,197,241	15,483,068	797,108	257,104	242,529	69,648,498

Order	Distributor	DFA SE	DFA NE	MDVA	CMPA	Land O'Lakes	Cumberland Valley	Mt. Joy	Total Base Assignment
5	Borden Dairy KY			521,354					521,354
33	Broughton Foods	59,001							59,001
1	Cloverland Farms Dairy			4,825,840			262,755		5,088,595
1	Crowley Foods	670,213							670,213
1	Cumberland Dairy					300,297			300,297
5	Dairy Fresh	14,208,767							14,208,767
1	Dutch Valley Foods					283,264			283,264
5	Harris Teeter				2,705,057				2,705,057
5	Homestead Creamery				490,639				490,639
1	HP Hood	910,694		910,694		231,066			2,052,454
5	Land-O-Sun Spartanburg	1,333,136							1,333,136
1	Marva Maid Landover	1,230,696		1,230,696					2,461,392
VA	Marva Maid Newport News	8,881,166		2,871,583	4,615,402				16,368,151
5	Mayfield			903,137					903,137
5	Milkco			1,904,603					1,904,603
33	Nestle	342,191							342,191
VA	Potomac Farms			395,979					395,979
7	Saputo - KY	330,120							330,120
1	Saputo - NY	321,887							321,887
33	Superior Dairy			1,745,463					1,745,463
1	Tuscan Lehigh Dairies	467,255	485,399					247,859	1,200,513
5	United Dairy			1,204,744	6,826,881				8,031,624
1	Upstate Niagara			520,455					520,455
1	Wawa Dairy			414,751					414,751
5	Westover Dairy			7,279,749					7,279,749
VA	White Wave Mt. Crawford				1,185,376				1,185,376
5	Winchester Farms	61,065							61,065
TOTAL		28,816,191	485,399	24,729,048	15,823,355	814,627	262,755	247,859	71,179,234

9-month Base Minus Total	(0)	(0)	(0)
---------------------------------	------------	------------	------------

Virginia State Milk Commission
 Producer Base Transfers
 For Commission Approval: December 13, 2018

Date Received	Effective Date	Cooperative	Consigned	Action	Transfer Number	Producer Name	License Number	Previous Base		Adjusted Base	
								9-Month	3-Month	9-Month	3-Month
September 26, 2018	October 1, 2018	DFA	No	Total Transfer	1002	Walnut Lane Dairy Inc	004475	14,568	13,549	0	0
September 26, 2018	October 1, 2018	DFA	No	Increase	1002	Cub Run Dairy LC	003397	886,028	824,006	900,596	837,555
September 27, 2018	October 1, 2018	MDVA	No	Total Transfer	1003	Zimmerman Sam H &/or Elaine	004455	27,814	25,867	0	0
September 27, 2018	October 1, 2018	MDVA	No	Increase	1003	Fisher Amos G	005264	37,906	35,252	65,720	61,119
September 28, 2018	October 1, 2018	CMPA	No	Total Transfer	1004	Brubaker E Cline	000188	34,413	32,004	0	0
September 28, 2018	October 1, 2018	CMPA	Yes	Increase	1004	Hammer Ken & Cathy	004947	170,772	158,818	205,185	190,822
September 28, 2018	October 1, 2018	CMPA	Yes	Total Transfer	1005	Webb Lori H & Michael D-Briarwd Jersey FM	005173	13,730	12,769	0	0
September 28, 2018	October 1, 2018	CMPA	Yes	Increase	1005	Martin Jason & Kim Martin T/A Catawba	005310	68,884	64,063	82,614	76,832
October 12, 2018	October 16, 2018	MDVA	No	Total Transfer	1006	Blackwell John L or Betty	004004	39,468	36,705	0	0
October 12, 2018	October 16, 2018	MDVA	No	Increase	1006	Ingram GJ & Doris T/A Little River Dairy	005126	54,917	51,073	94,385	87,778

Virginia State Milk Commission
Base Assignment System
November 2018

	DFA SE	DFA NE	MDVA	CMPA	Land O'Lakes	Cumberland Valley	Mt. Joy	Established Base Total
Established 9-month Base	28,196,488	474,960	24,197,241	15,483,068	797,108	257,104	242,529	69,648,498

Order	Distributor	DFA SE	DFA NE	MDVA	CMPA	Land O'Lakes	Cumberland Valley	Mt. Joy	Total Base Assignment
5	Borden Dairy KY			458,149					458,149
33	Broughton Foods	49,324							49,324
1	Cloverland Farms Dairy			5,447,307			254,279		5,701,586
1	Crowley Foods	675,752							675,752
1	Cumberland Dairy					203,053			203,053
5	Dairy Fresh	12,018,178							12,018,178
1	Dutch Valley Foods					270,099			270,099
5	Harris Teeter				2,520,694				2,520,694
5	Homestead Creamery				389,597				389,597
1	HP Hood	985,961		985,961		315,197			2,287,118
5	Land-O-Sun Spartanburg	1,887,414							1,887,414
1	Marva Maid Landover	1,240,181		1,240,181					2,480,361
5	Marva Maid Newport News	9,496,691		1,580,818	5,339,068				16,416,577
5	Mayfield			828,429					828,429
5	Milkco			1,653,342					1,653,342
33	Nestle	354,152							354,152
VA	Potomac Farms			353,434					353,434
7	Saputo - KY	340,686							340,686
1	Saputo - NY	290,824							290,824
33	Superior Dairy			1,618,428					1,618,428
1	Tuscan Lehigh Dairies	487,160	469,741					239,864	1,196,765
5	United Dairy			1,010,848	5,728,141				6,738,990
1	Upstate Niagara			563,319					563,319
1	Wawa Dairy			414,338					414,338
5	Westover Dairy			7,776,784					7,776,784
VA	White Wave Mt. Crawford				1,335,424				1,335,424
5	Winchester Farms	60,314							60,314
TOTAL		27,886,636	469,741	23,931,337	15,312,924	788,349	254,279	239,864	68,883,130

9-month Base Minus Total		(0)		(0)					0
---------------------------------	--	------------	--	------------	--	--	--	--	----------

Virginia State Milk Commission
 Base Assignment System
 November 2018
 CORRECTION 1102

	DFA SE	DFA NE	MDVA	CMPA	Land O'Lakes	Cumberland Valley	Mt. Joy	Established Base Total
Established 9-month Base	28,196,488	474,960	24,197,241	15,483,068	797,108	257,104	242,529	69,648,498
Corrected 9-month Base	28,525,991	474,960	23,867,738	15,483,068	797,108	257,104	242,529	69,648,498

Order	Distributor	DFA SE	DFA NE	MDVA	CMPA	Land O'Lakes	Cumberland Valley	Mt. Joy	Total Base Assignment
5	Borden Dairy KY			458,149					458,149
33	Broughton Foods	49,324							49,324
1	Cloverland Farms Dairy			5,447,307			254,279		5,701,586
1	Crowley Foods	675,752							675,752
1	Cumberland Dairy					203,053			203,053
5	Dairy Fresh	12,018,178							12,018,178
1	Dutch Valley Foods					270,099			270,099
5	Harris Teeter				2,520,694				2,520,694
5	Homestead Creamery				389,597				389,597
1	HP Hood	985,961		985,961		315,197			2,287,118
5	Land-O-Sun Spartanburg	1,887,414							1,887,414
1	Marva Maid Landover	1,240,181		1,240,181					2,480,361
5	Marva Maid Newport News	9,822,573		1,254,936	5,339,068				16,416,577
5	Mayfield			828,429					828,429
5	Milkco			1,653,342					1,653,342
33	Nestle	354,152							354,152
VA	Potomac Farms			353,434					353,434
7	Saputo - KY	340,686							340,686
1	Saputo - NY	290,824							290,824
33	Superior Dairy			1,618,428					1,618,428
1	Tuscan Lehigh Dairies	487,160	469,741					239,864	1,196,765
5	United Dairy			1,010,848	5,728,141				6,738,990
1	Upstate Niagara			563,319					563,319
1	Wawa Dairy			414,338					414,338
5	Westover Dairy			7,776,784					7,776,784
VA	White Wave Mt. Crawford				1,335,424				1,335,424
5	Winchester Farms	60,314							60,314
TOTAL		28,212,519	469,741	23,605,455	15,312,924	788,349	254,279	239,864	68,883,130

9-month Base Minus Total	0	(0)	0
---------------------------------	----------	------------	----------

Virginia State Milk Commission
 Producer Base Transfers
 For Commission Approval: December 13, 2018

Date Received	Effective Date	Cooperative	Consigned	Action	Transfer Number	Producer Name	License Number	Previous Base		Adjusted Base	
								9-Month	3-Month	9-Month	3-Month
October 23, 2018	November 1, 2018	MDVA	No	Total Transfer	1102	Kettle Wind Farm LLC	004162	329,503	306,438	0	0
October 23, 2018	November 1, 2018	DFA	No	Issue	1102	Ingleside Dairy Farm Inc	005326	0	0	329,503	306,438

Virginia State Milk Commission
 Base Assignment System
 December 2018

	DFA SE	DFA NE	MDVA	CMPA	Land O'Lakes	Cumberland Valley	Mt. Joy	Established Base Total
Established 9-month Base	28,525,991	474,960	23,867,738	15,483,068	797,108	257,104	242,529	69,648,498

Order	Distributor	DFA SE	DFA NE	MDVA	CMPA	Land O'Lakes	Cumberland Valley	Mt. Joy	Total Base Assignment
5	Borden Dairy KY			426,451					426,451
33	Broughton Foods	52,569							52,569
1	Cloverland Farms Dairy			5,406,067			262,755		5,668,821
1	Crowley Foods	671,214							671,214
1	Cumberland Dairy					300,587			300,587
5	Dairy Fresh	12,620,418							12,620,418
1	Dutch Valley Foods					241,187			241,187
5	Harris Teeter				2,666,840				2,666,840
5	Homestead Creamery				481,129				481,129
1	HP Hood	965,981		965,981		272,853			2,204,815
5	Land-O-Sun Spartanburg	1,703,925							1,703,925
1	Marva Maid Landover	1,166,962		1,166,962					2,333,924
5	Marva Maid Newport News	10,287,201		2,388,388	5,464,839				18,140,428
5	Mayfield			905,727					905,727
5	Milkco			1,900,744					1,900,744
33	Nestle	365,204							365,204
VA	Potomac Farms			386,427					386,427
7	Saputo - KY	434,802							434,802
1	Saputo - NY	321,127							321,127
33	Superior Dairy			1,780,814					1,780,814
1	Tuscan Lehigh Dairies	513,152	485,399					247,859	1,246,410
5	United Dairy			1,068,605	6,055,429				7,124,034
1	Upstate Niagara			534,203					534,203
1	Wawa Dairy			444,667					444,667
5	Westover Dairy			7,017,267					7,017,267
VA	White Wave Mt. Crawford				1,155,119				1,155,119
5	Winchester Farms	50,381							50,381
TOTAL		29,152,936	485,399	24,392,304	15,823,355	814,627	262,755	247,859	71,179,234

9-month Base Minus Total		(0)	(0)	0					
---------------------------------	--	------------	------------	----------	--	--	--	--	--

Virginia State Milk Commission
Base Assignment System
December 2018
CORRECTION 1202-03

	DFA SE	DFA NE	MDVA	CMPA	Land O'Lakes	Cumberland Valley	Mt. Joy	Established Base Total
Established 9-month Base	28,525,991	474,960	23,867,738	15,483,068	797,108	257,104	242,529	69,648,498
Corrected 9-month Base	28,517,952	474,960	24,001,599	15,357,246	797,108	257,104	242,529	69,648,498

Order	Distributor	DFA SE	DFA NE	MDVA	CMPA	Land O'Lakes	Cumberland Valley	Mt. Joy	Total Base Assignment
5	Borden Dairy KY			441,930					441,930
33	Broughton Foods	54,477							54,477
1	Cloverland Farms Dairy			5,611,824			262,755		5,874,579
1	Crowley Foods	695,577							695,577
1	Cumberland Dairy					311,497			311,497
5	Dairy Fresh	13,078,493							13,078,493
1	Dutch Valley Foods					249,941			249,941
5	Harris Teeter				2,763,636				2,763,636
5	Homestead Creamery				498,592				498,592
1	HP Hood	1,015,827		1,015,827		253,189			2,284,842
5	Land-O-Sun Spartanburg	1,765,771							1,765,771
1	Marva Maid Landover	1,209,318		1,209,318					2,418,637
5	Marva Maid Newport News	9,552,830		1,702,209	4,960,275				16,215,314
5	Mayfield			938,602					938,602
5	Milkco			1,969,734					1,969,734
33	Nestle	378,460							378,460
VA	Potomac Farms			400,453					400,453
7	Saputo - KY	450,584							450,584
1	Saputo - NY	332,783							332,783
33	Superior Dairy			1,845,451					1,845,451
1	Tuscan Lehigh Dairies	558,392	485,399					247,859	1,291,650
5	United Dairy			1,107,392	6,275,219				7,382,610
1	Upstate Niagara			553,593					553,593
1	Wawa Dairy			460,807					460,807
5	Westover Dairy			7,271,968					7,271,968
VA	White Wave Mt. Crawford				1,197,046				1,197,046
5	Winchester Farms	52,210							52,210
TOTAL		29,144,720	485,399	24,529,107	15,694,768	814,627	262,755	247,859	71,179,234

9-month Base Minus Total	0	0	(0)	0
---------------------------------	----------	----------	------------	----------

Virginia State Milk Commission
 Producer Base Transfers
 For Commission Approval: December 13, 2018

Date Received	Effective Date	Cooperative	Consigned	Action	Transfer Number	Producer Name	License Number	Previous Base		Adjusted Base	
								9-Month	3-Month	9-Month	3-Month
November 27, 2018	December 1, 2018	DFA	No	Total Transfer	1202	No-El Farm & Son LLC	004496	8,039	7,476	0	0
November 27, 2018	December 1, 2018	MDVA	No	Increase	1202	Lake View Dairy LLC	004422	186,569	173,509	194,608	180,985
November 30, 2018	December 1, 2018	CMPA	No	Total Transfer	1203	Hopkins HL CH C-HoHa Dairy	003464	138,601	128,899	0	0
November 30, 2018	December 1, 2018	MDVA	Yes	Issue	1203	French Brothers Dairy LLC	002230	0	0	109,834	102,146
November 30, 2018	December 1, 2018	MDVA	No	Increase	1203	Mountain Hollow Dairy LLC	004560	204,012	189,731	220,000	204,600
November 30, 2018	December 1, 2018	CMPA	Yes	Increase	1203	Martin Jason & Kim Martin T/A Catawba	005310	82,614	76,832	95,393	88,716

Respectfully submitted,

Handwritten signature of Gerald Heatwole in cursive script, positioned above a horizontal line.

Mr. Gerald Heatwole
Chairman

Handwritten signature of Crafton Wilkes in cursive script, positioned above a horizontal line.

Crafton Wilkes
Administrator