

FINAL MINUTES
Milk Commission Meeting Held June 16, 2016

Minutes of the meeting of the Milk Commission, held at the Virginia Department of Forestry located at 900 Natural Resource Drive, Charlottesville, VA 22903.

THE COMMISSION:

PRESENT: Kenneth Smith, Chairperson; John Swanson, Commissioner; Patrick Crawford, Commissioner; Bruce E. Mayer; Commissioner; Crafton Wilkes, Administrator; Jessica Roberts, Auditor II.

Absent:

Gerald Heatwole, Commissioner; Kate Blair Farmer, Commissioner; Robb Watters, Commissioner;

Board members called the meeting to order at 1:30 P.M.

Kenneth Smith asked for a motion to accept the minutes from the previous two meetings. Crafton Wilkes reminded the board that the minutes for the last two meetings were tabled due to personnel issues in the office, which delayed the completion of the final minutes. The minutes from the December 2015 and February 2016 meetings were passed around to board members for review. On the motion to approve the December 2015 minutes as presented, John Swanson so moved and Bruce E. Mayer seconded the motion. On the motion to approve the February 2016 minutes as presented, John Swanson so moved and Bruce E. Mayer seconded the motion.

The Administrator gave a review of Class I and Class II sales and production. There was a brief discussion on the effect of feed prices being up, as well as the current milk supply in China and its effect on the dairy industry in the United States.

The Administrator presented a request for a distributor license for the online retailer Jet.com. As the popularity of online retailers selling milk in the state of Virginia is becoming more apparent, members discussed the consequences of licensing these companies as a distributor rather than a retailer. Concerns included the Commission's ability to accurately track fluid milk sales from such retailers, the amount of sensitive information that the Commission could potentially be privy to, and the need to revise the regulations to include an additional license category. The current applicant has agreed to comply with the Rules and Regulations of the Commission, and report Virginia milk sales to the commission through a monthly report. Through a motion so moved by Bruce E. Mayer and seconded by Patrick Crawford, the board denied the application, keeping jet.com as a retailer and not a distributor.

The meeting opened for public comment. There was no public comment.

<u>License Number</u>	<u>License Type</u>	<u>Distributor</u>	<u>Company Representative</u>	<u>Market</u>	<u>Approve/Deny</u>
--	NPGD	Jet.com	Stephanie Brensilver	All	Deny



Commonwealth of Virginia
Virginia State Milk Commission
Crafton O. Wilkes, Administrator
www.vdacs.virginia.gov/food-state-milk-commission

102 Governor Street
Suite 205
Richmond, VA 23219
Tel: 804-786-2013
Fax: 804-371-8700

Announcement of Producer Class I Price at 3.5% Butterfat

June 2016

	APR 2016	MAY 2016	JUN 2016
Eastern Market			
Established Price	\$8.26	\$8.26	\$8.26
Add Adjustment (per §2VAC15-20-81)	\$11.58	\$11.53	\$10.98
Eastern Market Class I Price (per cwt)	\$19.84	\$19.79	\$19.24
Eastern Market Skim Price (per cwt)	12.3195	12.2195	11.4095
Eastern Market Butterfat Price (per lb)	2.2716	2.2865	2.3518
Western Market			
Established Price	\$7.96	\$7.96	\$7.96
Add Adjustment (per §2VAC15-20-81)	\$11.68	\$11.63	\$11.08
Western Market Class I Price (per cwt)	\$19.64	\$19.59	\$19.04
Western Market Skim Price (per cwt)	12.1195	12.0195	11.2095
Western Market Butterfat Price (per lb)	2.2696	2.2845	2.3498
Southwestern Market			
Established Price	\$7.76	\$7.76	\$7.76
Add Adjustment (per §2VAC15-20-81)	\$11.10	\$11.06	\$10.51
Southwestern Market Class I Price (per cwt)	\$18.86	\$18.82	\$18.27
Southwestern Market Skim Price (per cwt)	11.3450	11.2450	10.4350
Southwestern Market Butterfat Price (per lb)	2.2619	2.2768	2.3421
Class II Price Announcement Date			
	MAY 4, 2016	JUN 2, 2016	JUN 29, 2016
Milk Commission Class II Price (per cwt)	\$13.54		
Milk Commission Class II Skim Price (per cwt)	\$5.8900	\$5.7100	\$5.8600
Milk Commission Class II Butterfat Price (per lb)	2.2446		
Milk Commission Bi-Monthly Index			
	322.4	322.3	322.4
Milk Commission Assessment Rate (per cwt)			
	0.03950	0.03950	0.03950
Federal Order Base Class I Price (per cwt)			
	\$13.74	\$13.70	\$13.14

June 2016 Highlights

Next Announcement: Jun. 22, 2016

-The Eastern Market Class I price for June decreased from May by \$0.55 per cwt. The skim price decreased by \$0.81 per cwt, and the butterfat price increased by \$0.07 per lb.

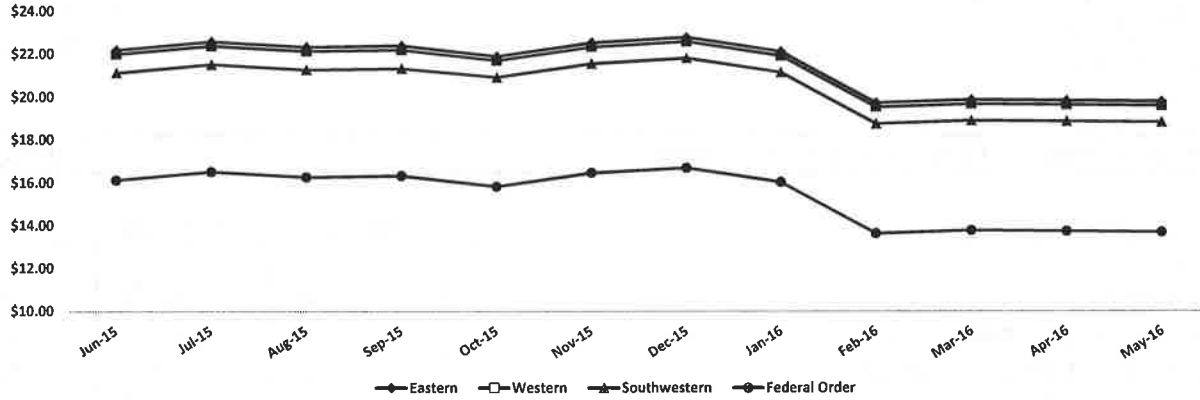
-The Western Market Class I price for June decreased from May by \$0.55 per cwt. The skim price decreased by \$0.81 per cwt, and the butterfat price increased by \$0.07 per lb.

-The Southwestern Market Class I price for June decreased from May by \$0.55 per cwt. The skim price decreased by \$0.81 per cwt, and the butterfat price increased by \$0.07 per lb.

Virginia State Milk Commission
Class I Price Dashboard
June 2016

Months Plotted: 12

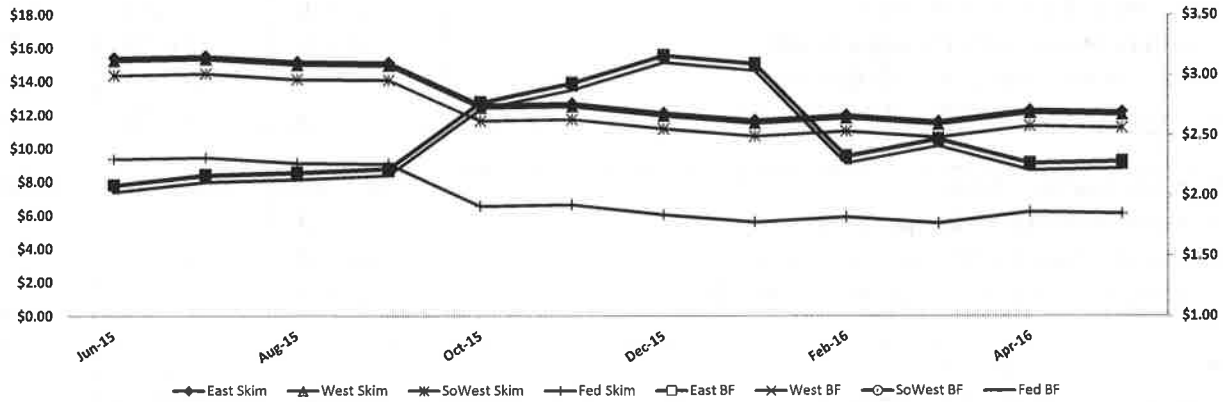
Class I Price by Market



	Class I Price (per cwt)			
	Eastern	Western	Southwestern	Federal Order*
12-Month High	\$22.80	\$22.60	\$21.83	\$16.71
12-Month Low	\$19.74	\$19.54	\$18.77	\$13.64
12-Month Avg.	\$21.52	\$21.32	\$20.52	\$15.43
Current Month	\$19.24	\$19.04	\$18.27	\$13.14

*The Federal Order Class I Price is a baseline price, and does not factor in location differentials

Class I Component Price by Market

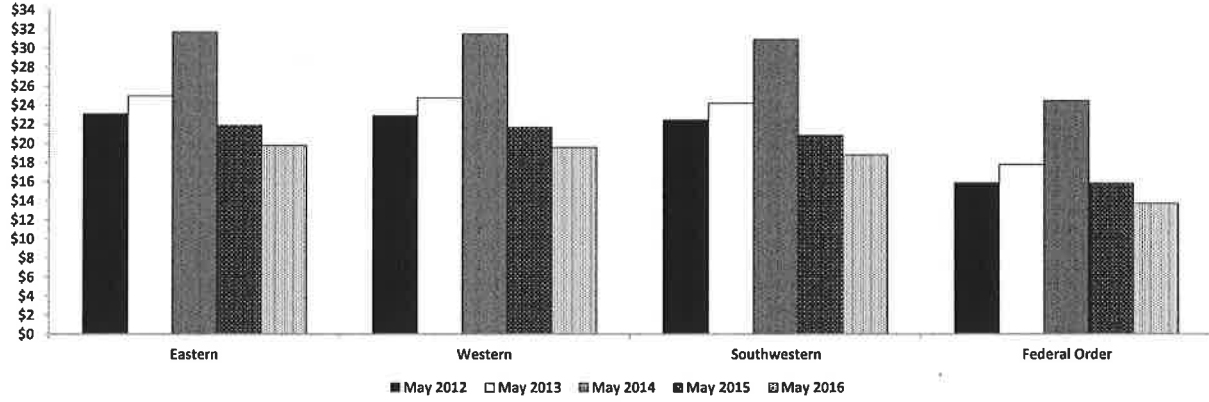


	Class I Component Price							
	Eastern Skim (per cwt)	Eastern Butterfat (per lb)	Western Skim (per cwt)	Western Butterfat (per lb)	Southwestern Skim (per cwt)	Southwestern Butterfat (per lb)	Federal Order Skim (per cwt)	Federal Order Butterfat (per lb)
12-Month High	\$15.5445	\$3.1658	\$15.3445	\$3.1638	\$14.4785	\$3.1561	\$9.4700	\$3.1048
12-Month Low	\$11.6395	\$2.0888	\$11.4395	\$2.0868	\$10.6650	\$2.0782	\$5.5400	\$2.0281
12-Month Avg.	\$13.2303	\$2.5012	\$13.0303	\$2.4992	\$12.2240	\$2.4911	\$7.1433	\$2.4403
Current Month	\$11.4095	\$2.3518	\$11.2095	\$2.3498	\$10.4350	\$2.3421	\$5.3100	\$2.2908

Virginia State Milk Commission
Class I Price Dashboard
June 2016

Type: Annual

Class I Price Comparison



Class I Price Comparison by Month

	May 2012	May 2013	May 2014	May 2015	May 2016
Eastern	\$23.12	\$24.98	\$31.69	\$21.90	\$19.79
Western	\$22.92	\$24.78	\$31.49	\$21.70	\$19.59
Southwestern	\$22.47	\$24.21	\$30.92	\$20.84	\$18.82
Federal Order	\$15.85	\$17.76	\$24.47	\$15.83	\$13.70



VIRGINIA DEPARTMENT
OF AGRICULTURE AND
CONSUMER SERVICES

Commonwealth of Virginia
Virginia State Milk Commission
Crafton O. Wilkes, Administrator
www.vdacs.virginia.gov/food-state-milk-commission

102 Governor Street
Suite 205
Richmond, VA 23219
Tel: 804-786-2013
Fax: 804-371-8700

Announcement of Producer Class II Price at 3.5% Butterfat

May 2016

	MAR 2016	APR 2016	MAY 2016
State Milk Commission Class II Price (per cwt)	\$13.57	\$13.54	\$13.53
Class II Skim Price (per cwt)	6.0500	5.8900	5.7100
Class II Butterfat Price (per lb)	2.2098	2.2446	2.2916

May 2016 Highlights

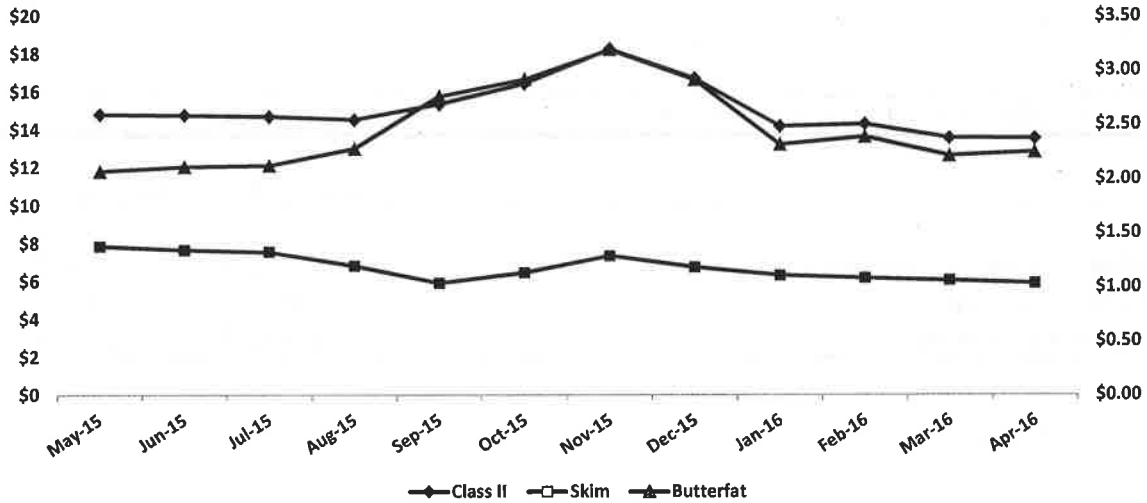
Next Announcement: Jun. 29, 2016

-The Class II price for May decreased from April by \$0.01 per cwt. The Class II Skim price decreased by \$0.18 per cwt, and the Class II Butterfat price increased by \$0.05 per lb.

Virginia State Milk Commission
Class II Dashboard
May 2016

Months Plotted: 12

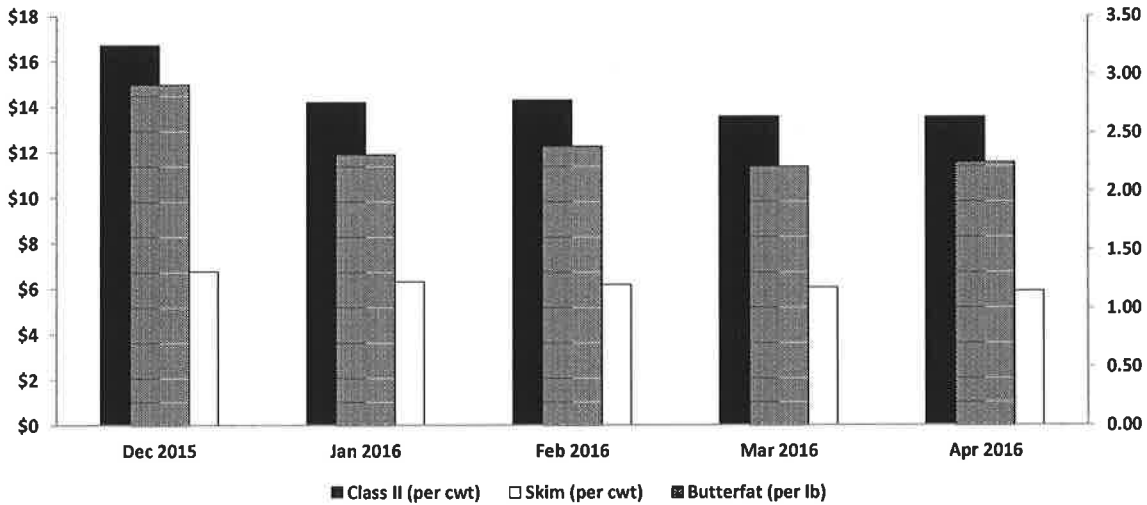
Class II and Component Price



	Class II (per cwt)	Skim (per cwt)	Butterfat (per lb)
12-Month High	\$18.26	\$7.6600	\$3.1900
12-Month Low	\$13.54	\$5.8900	\$2.1081
12-Month Avg.	\$15.13	\$6.6291	\$2.4939
Current Month	\$13.53	\$5.7100	\$2.2916

Comparison: Monthly

Class II Price Comparison



	Dec 2015	Jan 2016	Feb 2016	Mar 2016	Apr 2016
Class II (per cwt)	\$16.71	\$14.19	\$14.30	\$13.57	\$13.54
Skim (per cwt)	\$6.7500	\$6.3100	\$6.1700	\$6.0500	\$5.8900
Butterfat (per lb)	\$2.9127	\$2.3132	\$2.3848	\$2.2098	\$2.2446

Virginia State Milk Commission
Producer Base Transfers
For Commission Approval: June 16, 2016

The Administrator read and considered the following producer base transfer requests and made the required corrections to monthly processor base assignments:

Date Received	Effective Date	Cooperative	Consigned	Action	Transfer Number	Producer Name	License Number	Previous Base		Adjusted Base	
								9-Month	3-Month	9-Month	3-Month
February 4, 2016	March 1, 2016	MDVA	Yes	Cancel	--	Horst Galen S & Wilmer S	004864	27,704	26,042	0	0
February 4, 2016	March 1, 2016	MDVA	Yes	Increase	--	Gehman Elton P/Grace E	004330	22,033	20,711	49,737	46,753
February 22, 2016	March 1, 2016	MDVA	Yes	Cancel	--	Diller Nathaniel & Gordon Curtis L	004253	38,991	36,652	0	0
February 22, 2016	March 1, 2016	MDVA	Yes	Increase	--	Palmyra Farm LLC	003894	36,319	34,140	75,310	70,792
February 22, 2016	March 1, 2016	MDVA	Yes	Cancel	--	Harshman A Dennis/Donna L	004767	9,653	9,074	0	0
February 22, 2016	March 1, 2016	MDVA	Yes	Increase	--	Benedict Amos W, T/A Ben-Akers	003858	22,307	20,969	31,960	30,043
March 7, 2016	March 1, 2016	MDVA	Yes	Cancel	--	Stoltzfus David F/Annie M	005123	10,389	9,765	0	0
March 7, 2016	March 1, 2016	MDVA	Yes	Issue	--	Stoltzfus Elam B	005265	0	0	10,389	9,765
February 22, 2016	March 1, 2016	MDVA	Yes	Cancel	--	Koontz Alan R/Trudy L	004753	35,010	32,909	0	0
February 22, 2016	March 1, 2016	MDVA	Yes	Increase	--	Wiles Kenneth E Jr	004112	23,139	21,750	58,149	54,659
March 7, 2016	March 1, 2016	MDVA	Yes	Cancel	--	Snyder Merle D & Paul R T/A Snyder Creek Farms	004913	21,814	20,505	0	0
March 7, 2016	March 1, 2016	MDVA	Yes	Issue	--	Snyder Creek Farm LLC	005266	0	0	21,814	20,505
March 7, 2016	March 1, 2016	MDVA	Yes	Cancel	--	King Aaron K & Katie S	004853	18,828	17,699	0	0
March 7, 2016	March 1, 2016	MDVA	Yes	Increase	--	Callahan J R SR/Gloria	003678	22,406	21,062	41,234	38,761
March 7, 2016	March 1, 2016	MDVA	Yes	Cancel	--	Stoltzfoos Isaac F & Barbara B	004953	10,801	10,153	0	0
March 7, 2016	March 1, 2016	MDVA	Yes	Increase	--	Horst Joel L/Evelyn R	002143	9,290	8,732	20,091	18,885
March 7, 2016	March 1, 2016	MDVA	Yes	Cancel	--	Bard Richard G/Patti J T/A Lick Hollow Dairy	004263	9,291	8,733	0	0
March 7, 2016	March 1, 2016	MDVA	Yes	Increase	--	Meck E David/Barbara A	003879	9,539	8,967	18,830	17,700
February 3, 2016	March 1, 2016	CMPA	No	Consign	--	Sunny Meadow Farm Inc	005260	103,187	96,996	103,187	96,996
February 3, 2016	March 1, 2016	CMPA	Yes	Consign	--	Sunny Meadow Farm Inc	005260	103,187	96,996	103,187	96,996
February 9, 2016	March 1, 2016	CMPA	No	Consign	--	Martin Aaron T/A Sunset Lane Dairy LLC	005242	76,606	72,010	76,606	72,010
February 9, 2016	March 1, 2016	CMPA	Yes	Consign	--	Martin Aaron T/A Sunset Lane Dairy LLC	005242	76,606	72,010	76,606	72,010
February 9, 2016	March 1, 2016	DFA SE	No	Amend	0302	Gilbert W Horst T/A Union Springs Dairy	004363	132,569	124,615	132,569	124,615
February 9, 2016	March 1, 2016	DFA SE	No	Amend	0302	Horst Galen T/A Union Springs Dairy	004363	132,569	124,615	132,569	124,615
February 26, 2016	March 1, 2016	DFA SE	No	Total Transfer	0303	Brubaker Michael David	003955	88,691	83,370	0	0
February 26, 2016	March 1, 2016	DFA SE	No	Increase	0303	Matthews Farms	004019	157,131	147,703	196,649	184,850
February 26, 2016	March 1, 2016	DFA SE	No	Increase	0303	Blackwater Bend DA Inc	002117	69,302	65,144	118,475	111,367
February 29, 2016	March 1, 2016	DFA SE	No	Total Transfer	0304	Heatwole Dale L-D & D Dalry	002118	57,285	53,848	0	0
February 29, 2016	March 1, 2016	DFA SE	No	Increase	0304	Locust Hill Dairy LLC, T/A Locust Hill Dairy	004528	58,822	55,292	116,107	109,140

Virginia State Milk Commission
Base Assignment System
March 2016

Established 9-month Base	DFA SE	DFA NE	MDVA	CMPA	Land O'Lakes	Cumberland Valley	Mt. Joy			Established Base Total
	29,989,777	291,648	25,382,970	15,351,732	854,220	266,629	126,403			72,263,379

Order	Distributor	DFA SE	DFA NE	MDVA	CMPA	Land O'Lakes	Cumberland Valley	Mt. Joy		Total Base Assignment
5	Borden Dairy KY			487,179						487,179
33	Broughton Foods	155,485								155,485
1	Cloverland Greenspring			5,137,387			271,494			5,408,882
1	Crowley Foods	676,756								676,756
1	Cumberland Dairy					222,317				222,317
5	Dairy Fresh	3,295,563		520,182	3,145,729					6,961,474
5	Harris Teeter				1,036,163					1,036,163
5	Homestead Creamery				382,689					382,689
1	HP Hood			1,523,177		200,000				1,723,177
5	Land-O-Sun Spartanburg			857,575						857,575
1	Marva Maid Landover			588,255						588,255
VA	Marva Maid Newport News	2,970,796		2,145,744	1,506,101					6,622,641
5	Mayfield			2,972,225						2,972,225
5	Milkco			1,921,527						1,921,527
33	Nestle	365,058								365,058
5	PET Richmond	7,322,539		4,694,182	9,561,191					21,577,912
VA	Potomac Farms			344,484						344,484
7	Saputo Dairy KY	174,943								174,943
1	Saputo Foods NY	469,804								469,804
33	Superior Dairy	1,234,554								1,234,554
1	Swiss Premium Dairy			2,896,751						2,896,751
1	Tuscan Lehigh Dairies	266,444	296,970			447,491		128,710		1,139,615
33	United Dairy	5,339,512								5,339,512
1	Upstate Niagara			184,979						184,979
1	Wawa Dairy			452,552						452,552
5	Westover Dairy	8,170,035								8,170,035
5	White Wave Mt. Crawford			1,119,966						1,119,966
5	Winchester Farms	95,547								95,547
TOTAL		30,537,036	296,970	25,846,163	15,631,873	869,808	271,494	128,710		73,582,054

9-month Base Minus Total			0	(0)						(0)
---------------------------------	--	--	----------	------------	--	--	--	--	--	------------

**Virginia State Milk Commission
Base Assignment System
March 2016**

Virginia Base				
Base Assignable to Virginia Plants:	6,967,124	Percentage of Base Assignable to Virginia Plants:		9.810623%
	DFA	MDVA	CMPA	TOTAL
Assignable Base:	30,281,425	25,382,970	15,351,732	71,016,127
Virginia Plant Base Assignment:	2,970,796	2,490,227	1,506,101	6,967,124
Virginia Plants	DFA	MDVA	CMPA	
Marva Maid Newport News:	2,970,796	2,145,744	1,506,101	6,622,641
PET Richmond				
Potomac Farms		344,484		344,484
White Wave Mt. Crawford				
Total	2,970,796	2,490,227	1,506,101	6,967,124

	DFA	MDVA	CMPA	Land O'Lakes	Cumberland Valley	Mt. Joy	Independent
Base Assigned to Virginia Plants:	2,970,796	2,490,227	1,506,101				
Percent of Total Base Assigned to Virginia Plants (%):	9.63%	9.63%	9.63%				
Base Assigned to Fully Regulated Federal Order Plants:	27,863,209	23,355,935	14,125,773	869,808	271,494	128,710	
Percent of Total Base Assigned to Federal Order Plants (%):	90.37%	90.37%	90.37%	100.00%	100.00%	100.00%	
Total Base Assigned:	30,834,006	25,846,163	15,631,873	869,808	271,494	128,710	
Assigned Base (From Base worksheet):	30,834,006	25,846,163	15,631,873	869,808	271,494	128,710	
Variance (Total Base Assigned - Assigned Base):							
Base Assigned to Federal Order 1 (%):	5.55%	41.72%		100.00%	100.00%	100.00%	
Base Assigned to Federal Order 5 (%):	61.24%	48.64%	90.37%				
Base Assigned to Federal Order 7 (%):	0.57%						
Base Assigned to Federal Order 33 (%):	23.01%						
Total Base Assigned to Federal Order Plants (%):	90.37%	90.37%	90.37%	100.00%	100.00%	100.00%	

**Virginia State Milk Commission
 Producer Base Transfers
 For Commission Approval: June 16, 2016**

The Administrator read and considered the following producer base transfer requests and made the required corrections to monthly processor base assignments:

Date Received	Effective Date	Cooperative	Consigned	Action	Transfer Number	Producer Name	License Number	Previous Base		Adjusted Base	
								9-Month	3-Month	9-Month	3-Month
March 15, 2016	March 16, 2016	CMPA	Yes	Partial Transfer	0305	Brooks Byron R T/A BR Brooks FM	005136	35,544	33,411	25,544	24,011
March 15, 2016	March 16, 2016	CMPA	No	Increase	0305	Fall Rose Dairy Inc	004418	206,093	193,727	216,093	203,127
March 15, 2016	March 16, 2016	DFA SE	No	Total Transfer	0306	Roudabush RL or Katy	004493	6,570	6,175	0	0
March 15, 2016	March 16, 2016	MDVA-Lanco	No	Increase	0306	Will James L & Sons	004467	28,993	27,253	35,563	33,428

Virginia State Milk Commission
Base Assignment System
March 2016
CORRECTION Transfer #6

	DFA SE	DFA NE	MDVA	CMPA	Land O'Lakes	Cumberland Valley	Mt. Joy		Established Base Total
Established 9-month Base	29,989,777	291,648	25,382,970	15,351,732	854,220	266,629	126,403		72,263,379
Corrected 9-month Base	29,983,207	291,648	25,389,540	15,351,732	854,220	266,629	126,403		72,263,379

Order	Distributor	DFA SE	DFA NE	MDVA	CMPA	Land O'Lakes	Cumberland Valley	Mt. Joy		Total Base Assignment
5	Borden Dairy KY			487,179						487,179
33	Broughton Foods	155,485								155,485
1	Cloverland Greenspring			5,137,387			271,494			5,408,882
1	Crowley Foods	676,756								676,756
1	Cumberland Dairy					222,317				222,317
5	Dairy Fresh	3,295,563		520,182	3,145,729					6,961,474
5	Harris Teeter				1,036,163					1,036,163
5	Homestead Creamery				382,689					382,689
1	HP Hood			1,523,177		200,000				1,723,177
5	Land-O-Sun Spartanburg			857,575						857,575
1	Marva Maid Landover			588,255						588,255
VA	Marva Maid Newport News	2,970,152		2,146,388	1,506,101					6,622,641
5	Mayfield			2,972,225						2,972,225
5	Milkco			1,921,527						1,921,527
33	Nestle	365,058								365,058
5	PET Richmond	7,316,493		4,700,227	9,561,191					21,577,912
VA	Potomac Farms			344,484						344,484
7	Saputo Dairy KY	174,943								174,943
1	Saputo Foods NY	469,804								469,804
33	Superior Dairy	1,234,554								1,234,554
1	Swiss Premium Dairy			2,896,751						2,896,751
1	Tuscan Lehigh Dairies	266,444	296,970			447,491		128,710		1,139,615
33	United Dairy	5,339,512								5,339,512
1	Upstate Niagara			184,979						184,979
1	Wawa Dairy			452,552						452,552
5	Westover Dairy	8,170,035								8,170,035
5	White Wave Mt. Crawford			1,119,966						1,119,966
5	Winchester Farms	95,547								95,547
TOTAL		30,530,346	296,970	25,852,853	15,631,873	869,808	271,494	128,710		73,582,054

9-month Base Minus Total					(0)					(0)
---------------------------------	--	--	--	--	------------	--	--	--	--	------------

**Virginia State Milk Commission
Base Assignment System
March 2016**

Virginia Base				
Base Assignable to Virginia Plants:	6,967,124	Percentage of Base Assignable to Virginia Plants:		9.810623%
	DFA	MDVA	CMPA	TOTAL
Assignable Base:	30,274,855	25,389,540	15,351,732	71,016,127
Virginia Plant Base Assignment:	2,970,152	2,490,872	1,506,101	6,967,124
Virginia Plants	DFA	MDVA	CMPA	
Marva Maid Newport News:	2,970,152	2,146,388	1,506,101	6,622,641
PET Richmond				
Potomac Farms		344,484		344,484
White Wave Mt. Crawford				
Total	2,970,152	2,490,872	1,506,101	6,967,124

	DFA	MDVA	CMPA	Land O'Lakes	Cumberland Valley	Mt. Joy	Independent
Base Assigned to Virginia Plants:	2,970,152	2,490,872	1,506,101				
Percent of Total Base Assigned to Virginia Plants (%):	9.63%	9.63%	9.63%				
Base Assigned to Fully Regulated Federal Order Plants:	27,857,164	23,361,981	14,125,773	869,808	271,494	128,710	
Percent of Total Base Assigned to Federal Order Plants (%):	90.37%	90.37%	90.37%	100.00%	100.00%	100.00%	
Total Base Assigned:	30,827,316	25,852,853	15,631,873	869,808	271,494	128,710	
Assigned Base (From Base worksheet):	30,827,316	25,852,853	15,631,873	869,808	271,494	128,710	
Variance (Total Base Assigned - Assigned Base):			0				
Base Assigned to Federal Order 1 (%):	5.55%	41.71%		100.00%	100.00%	100.00%	
Base Assigned to Federal Order 5 (%):	61.24%	48.66%	90.37%				
Base Assigned to Federal Order 7 (%):	0.57%						
Base Assigned to Federal Order 33 (%):	23.01%						
Total Base Assigned to Federal Order Plants (%):	90.37%	90.37%	90.37%	100.00%	100.00%	100.00%	

Virginia State Milk Commission
Producer Base Transfers
For Commission Approval: June 16, 2016

The Administrator read and considered the following producer base transfer requests and made the required corrections to monthly processor base assignments:

Date Received	Effective Date	Cooperative	Consigned	Action	Transfer Number	Producer Name	License Number	Previous Base		Adjusted Base	
								9-Month	3-Month	9-Month	3-Month
April 5, 2016	April 1, 2016	MDVA	Yes	Cancel	--	Musselman H Wayne	004307	10,109	9,503	0	0
April 5, 2016	April 1, 2016	MDVA	Yes	Increase	--	Pugh Carl E & Son, T/A Carl Pugh & Son	002905	48,393	45,489	58,502	54,992
April 5, 2016	April 1, 2016	MDVA	Yes	Cancel	--	King Simeon B Jr & Mary H	005106	12,042	11,320	0	0
April 5, 2016	April 1, 2016	MDVA	Yes	Increase	--	Knab David A & Genee G	004828	12,415	11,670	24,457	22,990
April 5, 2016	April 1, 2016	MDVA	Yes	Cancel	--	Martin Isaac E/Diane M	004193	11,444	10,757	0	0
April 5, 2016	April 1, 2016	MDVA	Yes	Increase	--	Doody David F/Carole L	003828	14,859	13,967	26,303	24,724
April 5, 2016	April 1, 2016	MDVA	Yes	Cancel	--	Muller Thomas H/Ethel	004200	11,664	10,964	0	0
April 5, 2016	April 1, 2016	MDVA	Yes	Issue	--	Muller Thomas Jr	005268	0	0	11,664	10,964
April 5, 2016	April 1, 2016	MDVA	Yes	Cancel	--	Gordon Kenneth L/Eunice R	004707	9,925	9,329	0	0
April 5, 2016	April 1, 2016	MDVA	Yes	Issue	--	Gordon Jacob L	005269	0	0	9,925	9,329
April 5, 2016	April 1, 2016	MDVA	Yes	Cancel	--	Meck E David/Barbara A	003879	18,830	17,700	0	0
April 5, 2016	April 1, 2016	MDVA	Yes	Issue	--	Meck E Christopher	005270	0	0	18,830	17,700
April 5, 2016	April 1, 2016	MDVA	Yes	Cancel	--	Smucker Benuel M/Lavina S	005141	29,370	27,608	0	0
April 5, 2016	April 1, 2016	MDVA	Yes	Issue	--	Smucker Benuel M Jr	005267	0	0	29,370	27,608
March 17, 2016	April 1, 2016	DFA SE	No	Total Transfer	0402	Cherry Dale FM Inc	001052	56,475	53,087	0	0
March 17, 2016	April 1, 2016	DFA SE	No	Increase	0402	Hodges View Farm LLC	005226	16,137	15,168	72,612	68,255
March 18, 2016	April 1, 2016	CMPA	Yes	Partial Transfer	0403	Evergreen Ridge Dairy LLC	004717	576,126	541,559	566,634	532,637
March 18, 2016	April 1, 2016	CMPA	Yes	Increase	0403	Barker Phillip R. Sr T/A Barker's Dairy	005203	12,004	11,284	21,496	20,206
March 23, 2016	April 1, 2016	CMPA	No	Amend	0404	Twin Oaks Dairy FM LLC	003562	289,503	272,133	289,503	272,133
March 23, 2016	April 1, 2016	CMPA	No	Amend	0404	Twin Oaks Dairy FM LLC, James Douglas Brown	003562	289,503	272,133	289,503	272,133

Virginia State Milk Commission
Base Assignment System
April 2016

Established 9-month Base	DFA SE	DFA NE	MDVA	CMPA	Land O'Lakes	Cumberland Valley	Mt. Joy			Established Base Total
	29,983,207	291,648	25,389,540	15,351,732	854,220	266,629	126,403			72,263,379

Order	Distributor	DFA SE	DFA NE	MDVA	CMPA	Land O'Lakes	Cumberland Valley	Mt. Joy		Total Base Assignment
5	Borden Dairy KY			523,064						523,064
33	Broughton Foods	159,395								159,395
1	Cloverland Greenspring			5,349,460			262,737			5,612,197
1	Crowley Foods	619,611								619,611
1	Cumberland Dairy					214,768				214,768
5	Dairy Fresh	3,311,156		522,643	3,160,613					6,994,412
5	Harris Teeter				948,770					948,770
5	Homestead Creamery				371,048					371,048
1	HP Hood			1,397,445		200,000				1,597,445
5	Land-O-Sun Spartanburg			924,960						924,960
1	Marva Maid Landover			356,953						356,953
VA	Marva Maid Newport News	3,082,446		2,208,822	1,563,042					6,854,310
5	Mayfield			2,973,903						2,973,903
5	Milkco			2,020,154						2,020,154
33	Nestle	478,699								478,699
5	PET Richmond	6,698,773		3,927,360	9,084,146					19,710,279
VA	Potomac Farms			376,224						376,224
7	Saputo Dairy KY	166,958								166,958
1	Saputo Foods NY	447,454								447,454
33	Superior Dairy	1,159,292								1,159,292
1	Swiss Premium Dairy			2,774,941						2,774,941
1	Tuscan Lehigh Dairies	343,072	287,390			426,981		124,558		1,182,001
33	United Dairy	5,410,361								5,410,361
1	Upstate Niagara			186,881						186,881
1	Wawa Dairy			421,060						421,060
5	Westover Dairy	7,604,584								7,604,584
5	White Wave Mt. Crawford			1,055,020						1,055,020
5	Winchester Farms	63,696								63,696
TOTAL		29,545,496	287,390	25,018,890	15,127,619	841,750	262,737	124,558		71,208,439

9-month Base Minus Total										(0)
---------------------------------	--	--	--	--	--	--	--	--	--	------------

**Virginia State Milk Commission
Base Assignment System
April 2016**

Virginia Base				
Base Assignable to Virginia Plants:	7,230,533	Percentage of Base Assignable to Virginia Plants:		10.181537%
	DFA	MDVA	CMPA	TOTAL
Assignable Base:	30,274,855	25,389,540	15,351,732	71,016,127
Virginia Plant Base Assignment:	3,082,446	2,585,045	1,563,042	7,230,533
Virginia Plants	DFA	MDVA	CMPA	
Marva Maid Newport News:	3,082,446	2,208,822	1,563,042	6,854,310
PET Richmond				
Potomac Farms		376,224		376,224
White Wave Mt. Crawford				
Total	3,082,446	2,585,045	1,563,042	7,230,533

	DFA	MDVA	CMPA	Land O'Lakes	Cumberland Valley	Mt. Joy	Independent
Base Assigned to Virginia Plants:	3,082,446	2,585,045	1,563,042				
Percent of Total Base Assigned to Virginia Plants (%):	10.33%	10.33%	10.33%				
Base Assigned to Fully Regulated Federal Order Plants:	26,750,441	22,433,844	13,564,577	841,750	262,737	124,558	
Percent of Total Base Assigned to Federal Order Plants (%):	89.67%	89.67%	89.67%	100.00%	100.00%	100.00%	
Total Base Assigned:	29,832,886	25,018,890	15,127,619	841,750	262,737	124,558	
Assigned Base (From Base worksheet):	29,832,886	25,018,890	15,127,619	841,750	262,737	124,558	
Variance (Total Base Assigned - Assigned Base):		0					
Base Assigned to Federal Order 1 (%):	5.69%	41.92%		100.00%	100.00%	100.00%	
Base Assigned to Federal Order 5 (%):	59.26%	47.75%	89.67%				
Base Assigned to Federal Order 7 (%):	0.56%						
Base Assigned to Federal Order 33 (%):	24.16%						
Total Base Assigned to Federal Order Plants (%):	89.67%	89.67%	89.67%	100.00%	100.00%	100.00%	

**Virginia State Milk Commission
 Producer Base Transfers
 For Commission Approval: June 16, 2016**

The Administrator read and considered the following producer base transfer requests and made the required corrections to monthly processor base assignments:

Date Received	Effective Date	Cooperative	Consigned	Action	Transfer Number	Producer Name	License Number	Previous Base		Adjusted Base	
								9-Month	3-Month	9-Month	3-Month
March 31, 2016	April 1, 2016	MDVA	No	Partial Transfer	0405	Mole Hill Dairy LLC	004476	30,852	29,001	12,352	11,611
March 31, 2016	April 1, 2016	CMPA	No	Increase	0405	Beery Joseph M, T/A Rocky Run Farm	004430	72,139	67,811	90,639	85,201
April 13, 2016	April 16, 2016	DFA SE	No	Total Transfer	0406	Weaver Brothers	004552	23,714	22,292	0	0
April 13, 2016	April 16, 2016	MDVA-Lanco	No	Increase	0406	Will James L & Sons	004467	35,563	33,428	59,277	55,720
April 15, 2016	April 16, 2016	DFA SE	No	Total Transfer	0407	Swope Farm	004354	17,823	16,754	0	0
April 15, 2016	April 16, 2016	DFA SE	No	Increase	0407	Cedar Ridge Dairy Inc	004393	207,574	195,120	225,397	211,874

Virginia State Milk Commission
Base Assignment System
April 2016
CORRECTION 5 & 6 Agg

	DFA SE	DFA NE	MDVA	CMPA	Land O'Lakes	Cumberland Valley	Mt. Joy			Established Base Total
Established 9-month Base	29,983,207	291,648	25,389,540	15,351,732	854,220	266,629	126,403			72,263,379
Corrected 9-month Base	29,959,493	291,648	25,394,754	15,370,232	854,220	266,629	126,403			72,263,379

Order	Distributor	DFA SE	DFA NE	MDVA	CMPA	Land O'Lakes	Cumberland Valley	Mt. Joy		Total Base Assignment
5	Borden Dairy KY			523,064						523,064
33	Broughton Foods	159,395								159,395
1	Cloverland Greenspring			5,349,460			262,737			5,612,197
1	Crowley Foods	619,611								619,611
1	Cumberland Dairy					214,768				214,768
5	Dairy Fresh	3,311,156		522,643	3,160,613					6,994,412
5	Harris Teeter				948,770					948,770
5	Homestead Creamery				371,048					371,048
1	HP Hood			1,397,445		200,000				1,597,445
5	Land-O-Sun Spartanburg			924,960						924,960
1	Marva Maid Landover			356,953						356,953
VA	Marva Maid Newport News	3,080,031		2,209,353	1,564,926					6,854,310
5	Mayfield			2,973,903						2,973,903
5	Milkco			2,020,154						2,020,154
33	Nestle	478,699								478,699
5	PET Richmond	6,677,819		3,931,967	9,100,493					19,710,279
VA	Potomac Farms			376,224						376,224
7	Saputo Dairy KY	166,958								166,958
1	Saputo Foods NY	447,454								447,454
33	Superior Dairy	1,159,292								1,159,292
1	Swiss Premium Dairy			2,774,941						2,774,941
1	Tuscan Lehigh Dairies	343,072	287,390			426,981		124,558		1,182,001
33	United Dairy	5,410,361								5,410,361
1	Upstate Niagara			186,881						186,881
1	Wawa Dairy			421,060						421,060
5	Westover Dairy	7,604,584								7,604,584
5	White Wave Mt. Crawford			1,055,020						1,055,020
5	Winchester Farms	63,696								63,696
TOTAL		29,522,128	287,390	25,024,028	15,145,849	841,750	262,737	124,558		71,208,439

9-month Base Minus Total										(0)
---------------------------------	--	--	--	--	--	--	--	--	--	------------

**Virginia State Milk Commission
Base Assignment System
April 2016**

Virginia Base				
Base Assignable to Virginia Plants:	7,230,533	Percentage of Base Assignable to Virginia Plants:		10.181537%
	DFA	MDVA	CMPA	TOTAL
Assignable Base:	30,251,141	25,394,754	15,370,232	71,016,127
Virginia Plant Base Assignment:	3,080,031	2,585,576	1,564,926	7,230,533
Virginia Plants	DFA	MDVA	CMPA	
Marva Maid Newport News:	3,080,031	2,209,353	1,564,926	6,854,310
PET Richmond				
Potomac Farms		376,224		376,224
White Wave Mt. Crawford				
Total	3,080,031	2,585,576	1,564,926	7,230,533

	DFA	MDVA	CMPA	Land O'Lakes	Cumberland Valley	Mt. Joy	Independent
Base Assigned to Virginia Plants:	3,080,031	2,585,576	1,564,926				
Percent of Total Base Assigned to Virginia Plants (%):	10.33%	10.33%	10.33%				
Base Assigned to Fully Regulated Federal Order Plants:	26,729,487	22,438,451	13,580,923	841,750	262,737	124,558	
Percent of Total Base Assigned to Federal Order Plants (%):	89.67%	89.67%	89.67%	100.00%	100.00%	100.00%	
Total Base Assigned:	29,809,519	25,024,028	15,145,849	841,750	262,737	124,558	
Assigned Base (From Base worksheet):	29,809,519	25,024,028	15,145,849	841,750	262,737	124,558	
Variance (Total Base Assigned - Assigned Base):	0						
Base Assigned to Federal Order 1 (%):	5.69%	41.91%		100.00%	100.00%	100.00%	
Base Assigned to Federal Order 5 (%):	59.23%	47.76%	89.67%				
Base Assigned to Federal Order 7 (%):	0.56%						
Base Assigned to Federal Order 33 (%):	24.18%						
Total Base Assigned to Federal Order Plants (%):	89.67%	89.67%	89.67%	100.00%	100.00%	100.00%	

Virginia State Milk Commission
Base Assignment System
May 2016

Established 9-month Base	DFA SE	DFA NE	MDVA	CMPA	Land O'Lakes	Cumberland Valley	Mt. Joy			Established Base Total
		29,959,493	291,648	25,394,754	15,370,232	854,220	266,629	126,403		

Order	Distributor	DFA SE	DFA NE	MDVA	CMPA	Land O'Lakes	Cumberland Valley	Mt. Joy			Total Base Assignment
5	Borden Dairy KY			563,192							563,192
33	Broughton Foods	195,244									195,244
1	Cloverland Greenspring			5,196,341			271,494				5,467,835
1	Crowley Foods	650,974									650,974
1	Cumberland Dairy					232,824					232,824
5	Dairy Fresh	3,644,335		575,233	3,478,644						7,698,211
5	Harris Teeter				899,544						899,544
5	Homestead Creamery				331,996						331,996
1	HP Hood			1,558,487		200,000					1,758,487
5	Land-O-Sun Spartanburg			947,503							947,503
1	Marva Maid Landover			516,208							516,208
VA	Marva Maid Newport News	3,063,970		2,172,634	1,556,765						6,793,369
5	Mayfield			2,927,416							2,927,416
5	Milkco			2,068,897							2,068,897
33	Nestle	392,062									392,062
5	PET Richmond	7,139,340		4,378,998	9,383,762						20,902,100
VA	Potomac Farms			399,459							399,459
7	Saputo Dairy KY	254,259									254,259
1	Saputo Foods NY	444,333									444,333
33	Superior Dairy	1,256,113									1,256,113
1	Swiss Premium Dairy			2,829,709							2,829,709
1	Tuscan Lehigh Dairies	376,464	296,970			436,984		128,710			1,239,128
33	United Dairy	5,257,957									5,257,957
1	Upstate Niagara			171,516							171,516
1	Wawa Dairy			445,671							445,671
5	Westover Dairy	7,773,222									7,773,222
5	White Wave Mt. Crawford			1,106,900							1,106,900
5	Winchester Farms	57,925									57,925
TOTAL		30,506,199	296,970	25,858,162	15,650,711	869,808	271,494	128,710			73,582,054

9-month Base Minus Total	(0)	(0)	(0)	(0)	(0)	(0)	(0)	(0)	(0)	(0)
---------------------------------	------------	------------	------------	------------	------------	------------	------------	------------	------------	------------

**Virginia State Milk Commission
Base Assignment System
May 2016**

Virginia Base				
Base Assignable to Virginia Plants:	7,192,828	Percentage of Base Assignable to Virginia Plants:		10.128443%
	DFA	MDVA	CMPA	TOTAL
Assignable Base:	30,251,141	25,394,754	15,370,232	71,016,127
Virginia Plant Base Assignment:	3,063,970	2,572,093	1,556,765	7,192,828
Virginia Plants	DFA	MDVA	CMPA	
Marva Maid Newport News:	3,063,970	2,172,634	1,556,765	6,793,369
PET Richmond				
Potomac Farms		399,459		399,459
White Wave Mt. Crawford				
Total	3,063,970	2,572,093	1,556,765	7,192,828

	DFA	MDVA	CMPA	Land O'Lakes	Cumberland Valley	Mt. Joy	Independent
Base Assigned to Virginia Plants:	3,063,970	2,572,093	1,556,765				
Percent of Total Base Assigned to Virginia Plants (%):	9.95%	9.95%	9.95%				
Base Assigned to Fully Regulated Federal Order Plants:	27,739,199	23,286,069	14,093,945	869,808	271,494	128,710	
Percent of Total Base Assigned to Federal Order Plants (%):	90.05%	90.05%	90.05%	100.00%	100.00%	100.00%	
Total Base Assigned:	30,803,169	25,858,162	15,650,711	869,808	271,494	128,710	
Assigned Base (From Base worksheet):	30,803,169	25,858,162	15,650,711	869,808	271,494	128,710	
Variance (Total Base Assigned - Assigned Base):							
Base Assigned to Federal Order 1 (%):	5.74%	41.45%		100.00%	100.00%	100.00%	
Base Assigned to Federal Order 5 (%):	60.43%	48.60%	90.05%				
Base Assigned to Federal Order 7 (%):	0.83%						
Base Assigned to Federal Order 33 (%):	23.05%						
Total Base Assigned to Federal Order Plants (%):	90.05%	90.05%	90.05%	100.00%	100.00%	100.00%	

Virginia State Milk Commission
Producer Base Transfers
For Commission Approval: June 16, 2016

The Administrator read and considered the following producer base transfer requests and made the required corrections to monthly processor base assignments:

*The 30,000 lbs of 9-month base and 28,200 lbs of 3-month base acquired by the partnership of Whitaker Paul B & Michael B. were purchased by Michael B. Whitaker. Should the partnership be dissolved, Michael B. Whitaker would retain ownership of this base. Therefore, base for the partnership is apportioned as follows: Paul B Whitaker – 9-month Base: 244,741 lbs, 3-month Base: 230,056 lbs ; Michael B Whitaker – 9-month Base: 112,000 lbs, 3-month Base: 105,280 lbs.

Date Received	Effective Date	Cooperative	Consigned	Action	Transfer Number	Producer Name	License Number	Previous Base		Adjusted Base	
								9-Month	3-Month	9-Month	3-Month
May 6, 2016	May 1, 2016	DFA SE	No	Amend	--	Pleasant View Farms #2	004702	200,907	188,853	200,907	188,853
May 6, 2016	May 1, 2016	DFA NE	No	Amend	--	Pleasant View Farms #2	004702	200,907	188,853	200,907	188,853
May 10, 2016	May 1, 2016	DFA SE	Yes	Total Transfer	--	Rock Mary H	002931	75,049	70,546	0	0
May 10, 2016	May 1, 2016	DFA SE	Yes	Increase	--	New Generation Dairy	005214	1,396,697	1,312,895	1,471,746	1,383,441
April 27, 2016	May 1, 2016	DFA SE	No	Partial Transfer	0502	Hodges View Farm LLC	005226	72,612	68,255	16,137	15,168
April 27, 2016	May 1, 2016	Mt. Joy	No	Issue	0502	Nolt Delton L &/Or Maria S	005271	0	0	56,475	53,087
April 27, 2016	May 1, 2016	DFA SE	No	Partial Transfer	0503	Stanley Thomas E & Sons	001276	267,473	251,424	198,838	186,907
April 27, 2016	May 1, 2016	Mt. Joy	No	Increase	0503	Nolt Delton L &/Or Maria S	005271	56,475	53,087	125,110	117,604
April 28, 2016	May 1, 2016	DFA SE	No	Partial Transfer	0504	Retreat Dairy FM-CW/KH Green	000991	74,456	69,989	44,456	41,789
April 28, 2016	May 1, 2016	DFA SE	No	Increase	0504	Cedar Ridge Dairy Inc	004393	225,397	211,874	250,397	235,374
April 28, 2016	May 1, 2016	DFA SE	No	Increase	0504	Heatwole Luke E	004991	190,267	178,851	195,267	183,551
April 28, 2016	May 1, 2016	DFA SE	No	Total Transfer	0505	Taylor Dr L T	004869	56,952	53,535	0	0
April 28, 2016	May 1, 2016	DFA SE	No	Increase	0505	Heatwole Luke E	004991	195,267	183,551	215,267	202,351
April 28, 2016	May 1, 2016	DFA SE	No	Increase	0505	Homestead Valley Farm LLC	004939	164,234	154,380	176,186	165,615
April 28, 2016	May 1, 2016	DFA SE	No	Increase	0505	West-Rock Dairy LLC	000794	118,510	111,400	143,510	134,900
April 30, 2016	May 1, 2016	CMPA	Yes	Partial Transfer	0506	Evergreen Ridge Dairy LLC	004717	566,634	532,637	516,634	485,637
April 30, 2016	May 1, 2016	CMPA	No	Increase	0506	Waller Farms Inc	001379	402,345	378,204	422,345	397,004
April 30, 2016	May 1, 2016	CMPA	No	Increase	0506	Whitaker Paul B & Michael B. *	001434	326,741	307,136	356,741	335,336
April 30, 2016	May 1, 2016	CMPA	Yes	Partial Transfer	0507	Evergreen Ridge Dairy LLC	004717	516,634	485,637	503,627	473,410
April 30, 2016	May 1, 2016	CMPA	No	Increase	0507	Greenmount Dairy LLC	004499	242,993	228,413	256,000	240,640

Virginia State Milk Commission
Base Assignment System
May 2016
CORRECTION Transfer A, #2 & #3

	DFA SE	DFA NE	MDVA	CMPA	Land O'Lakes	Cumberland Valley	Mt. Joy		Established Base Total
Established 9-month Base	29,959,493	291,648	25,394,754	15,370,232	854,220	266,629	126,403		72,263,379
Corrected 9-month Base	29,633,476	492,555	25,394,754	15,370,232	854,220	266,629	251,513		72,263,379

Order	Distributor	DFA SE	DFA NE	MDVA	CMPA	Land O'Lakes	Cumberland Valley	Mt. Joy		Total Base Assignment
5	Borden Dairy KY			563,192						563,192
33	Broughton Foods	195,244								195,244
1	Cloverland Greenspring			5,196,341			271,494			5,467,835
1	Crowley Foods	650,974								650,974
1	Cumberland Dairy					232,824				232,824
5	Dairy Fresh	3,644,335		575,233	3,478,644					7,698,211
5	Harris Teeter				899,544					899,544
5	Homestead Creamery				331,996					331,996
1	HP Hood			1,558,487		200,000				1,758,487
5	Land-O-Sun Spartanburg			947,503						947,503
1	Marva Maid Landover			516,208						516,208
VA	Marva Maid Newport News	3,056,683		2,177,173	1,559,513					6,793,369
5	Mayfield			2,927,416						2,927,416
5	Milkco			2,068,897						2,068,897
33	Nestle	392,062								392,062
5	PET Richmond	7,146,627		4,374,458	9,381,015					20,902,100
VA	Potomac Farms			399,459						399,459
7	Saputo Dairy KY	254,259								254,259
1	Saputo Foods NY	444,333								444,333
33	Superior Dairy	1,256,113								1,256,113
1	Swiss Premium Dairy			2,829,709						2,829,709
1	Tuscan Lehigh Dairies	44,498	501,543			436,984		256,103		1,239,128
33	United Dairy	5,257,957								5,257,957
1	Upstate Niagara			171,516						171,516
1	Wawa Dairy			445,671						445,671
5	Westover Dairy	7,773,222								7,773,222
5	White Wave Mt. Crawford			1,106,900						1,106,900
5	Winchester Farms	57,925								57,925
TOTAL		30,174,233	501,543	25,858,162	15,650,711	869,808	271,494	256,103		73,582,054

9-month Base Minus Total										(0)
---------------------------------	--	--	--	--	--	--	--	--	--	------------

**Virginia State Milk Commission
Base Assignment System
May 2016**

Virginia Base				
Base Assignable to Virginia Plants:	7,192,828	Percentage of Base Assignable to Virginia Plants:		10.146318%
	DFA	MDVA	CMPA	TOTAL
Assignable Base:	30,126,031	25,394,754	15,370,232	70,891,017
Virginia Plant Base Assignment:	3,056,683	2,576,633	1,559,513	7,192,828
Virginia Plants	DFA	MDVA	CMPA	
Marva Maid Newport News:	3,056,683	2,177,173	1,559,513	6,793,369
PET Richmond				
Potomac Farms		399,459		399,459
White Wave Mt. Crawford				
Total	3,056,683	2,576,633	1,559,513	7,192,828

	DFA	MDVA	CMPA	Land O'Lakes	Cumberland Valley	Mt. Joy	Independent
Base Assigned to Virginia Plants:	3,056,683	2,576,633	1,559,513				
Percent of Total Base Assigned to Virginia Plants (%):	9.96%	9.96%	9.96%				
Base Assigned to Fully Regulated Federal Order Plants:	27,619,093	23,281,529	14,091,198	869,808	271,494	256,103	
Percent of Total Base Assigned to Federal Order Plants (%):	90.04%	90.04%	90.04%	100.00%	100.00%	100.00%	
Total Base Assigned:	30,675,776	25,858,162	15,650,711	869,808	271,494	256,103	
Assigned Base (From Base worksheet):	30,675,776	25,858,162	15,650,711	869,808	271,494	256,103	
Variance (Total Base Assigned - Assigned Base):		0					
Base Assigned to Federal Order 1 (%):	5.35%	41.45%		100.00%	100.00%	100.00%	
Base Assigned to Federal Order 5 (%):	60.71%	48.59%	90.04%				
Base Assigned to Federal Order 7 (%):	0.83%						
Base Assigned to Federal Order 33 (%):	23.15%						
Total Base Assigned to Federal Order Plants (%):	90.04%	90.04%	90.04%	100.00%	100.00%	100.00%	

Virginia State Milk Commission
Base Assignment System
June 2016

Established 3-month Base	DFA SE	DFA NE	MDVA	CMPA	Land O'Lakes	Cumberland Valley	Mt. Joy			Established Base Total
		27,855,467	463,002	23,871,069	14,448,018	802,967	250,631	236,422		

Order	Distributor	DFA SE	DFA NE	MDVA	CMPA	Land O'Lakes	Cumberland Valley	Mt. Joy			Total Base Assignment
				387,415							387,415
5	Borden Dairy KY										159,791
33	Broughton Foods	159,791									3,604,241
1	Cloverland Farms Dairy			3,359,058			245,183				601,833
1	Crowley Foods	601,833									224,633
1	Cumberland Dairy					224,633					6,250,472
5	Dairy Fresh	2,958,974		467,053	2,824,444						909,989
5	Harris Teeter				909,989						407,340
5	Homestead Creamery				407,340						1,576,266
1	HP Hood			1,376,266		200,000					477,924
5	Land-O-Sun Spartanburg			477,924							501,475
1	Marva Maid Landover			501,475							7,737,093
VA	Marva Maid Newport News	3,453,586		2,521,495	1,762,012						2,790,807
5	Mayfield			2,790,807							2,026,356
5	Milkco			2,026,356							388,855
33	Nestle	388,855									17,853,731
5	PET Richmond	4,882,997		4,740,587	8,230,147						389,708
VA	Potomac Farms			389,708							298,985
7	Saputo Dairy KY	298,985									407,227
1	Saputo Foods NY	407,227									1,187,091
33	Superior Dairy	1,187,091									2,747,396
1	Swiss Premium Dairy			2,747,396							1,055,047
1	Tuscan Lehigh Dairies	9,950	452,936			360,878		231,283			5,325,361
33	United Dairy	5,325,361									172,894
1	Upstate Niagara			172,894							388,627
1	Wawa Dairy			388,627							7,528,765
5	Westover Dairy	7,528,765									1,005,073
5	White Wave Mt. Crawford			1,005,073							46,498
5	Winchester Farms	46,498									66,450,890
TOTAL		27,249,914	452,936	23,352,132	14,133,931	785,511	245,183	231,283			

3-month Base Minus Total											(0)
---------------------------------	--	--	--	--	--	--	--	--	--	--	------------

**Virginia State Milk Commission
Base Assignment System
June 2016**

Virginia Base				
Base Assignable to Virginia Plants:	8,126,801	Percentage of Base Assignable to Virginia Plants:		12.195526%
	DFA	MDVA	CMPA	TOTAL
Assignable Base:	28,318,469	23,871,069	14,448,018	66,637,556
Virginia Plant Base Assignment:	3,453,586	2,911,202	1,762,012	8,126,801
Virginia Plants	DFA	MDVA	CMPA	
Marva Maid Newport News:	3,453,586	2,521,495	1,762,012	7,737,093
PET Richmond				
Potomac Farms		389,708		389,708
White Wave Mt. Crawford				
Total	3,453,586	2,911,202	1,762,012	8,126,801

	DFA	MDVA	CMPA	Land O'Lakes	Cumberland Valley	Mt. Joy	Independent
Base Assigned to Virginia Plants:	3,453,586	2,911,202	1,762,012				
Percent of Total Base Assigned to Virginia Plants (%):	12.47%	12.47%	12.47%				
Base Assigned to Fully Regulated Federal Order Plants:	24,249,264	20,440,930	12,371,919	785,511	245,183	231,283	
Percent of Total Base Assigned to Federal Order Plants (%):	87.53%	87.53%	87.53%	100.00%	100.00%	100.00%	
Total Base Assigned:	27,702,850	23,352,132	14,133,931	785,511	245,183	231,283	
Assigned Base (From Base worksheet):	27,702,850	23,352,132	14,133,931	785,511	245,183	231,283	
Variance (Total Base Assigned - Assigned Base):							
Base Assigned to Federal Order 1 (%):	5.31%	36.60%		100.00%	100.00%	100.00%	
Base Assigned to Federal Order 5 (%):	55.65%	50.94%	87.53%				
Base Assigned to Federal Order 7 (%):	1.08%						
Base Assigned to Federal Order 33 (%):	25.49%						
Total Base Assigned to Federal Order Plants (%):	87.53%	87.53%	87.53%	100.00%	100.00%	100.00%	

**Virginia State Milk Commission
Producer Base Transfers
For Commission Approval: June 16, 2016**

The Administrator read and considered the following producer base transfer requests and made the required corrections to monthly processor base assignments:

Date Received	Effective Date	Cooperative	Consigned	Action	Transfer Number	Producer Name	License Number	Previous Base		Adjusted Base	
								9-Month	3-Month	9-Month	3-Month
May 17, 2016	June 1, 2016	DFA SE	No	Partial Transfer	0602	Stevens Warren L & Son Inc	001281	298,746	280,821	248,746	233,821
May 17, 2016	June 1, 2016	MDVA	No	Increase	0602	Smiley Jane A T/A Bervalon Farm	004878	189,839	178,448	239,839	225,448
May 24, 2016	June 1, 2016	MDVA	Yes	Cancel	--	North View Fms Inc	003973	38,991	36,652	0	0
May 24, 2016	June 1, 2016	MDVA	Yes	Increase	--	Lepter Farms Inc	003942	35,267	33,151	74,258	69,803
May 24, 2016	June 1, 2016	MDVA	Yes	Cancel	--	Riggs C Larry/Judy W	004115	11,902	11,188	0	0
May 24, 2016	June 1, 2016	MDVA	Yes	Increase	--	Showalter, Vera A/Lee Roy & Hensley Anna Mary	001224	11,826	11,117	23,728	22,305
May 24, 2016	June 1, 2016	DFA SE	No	Partial Transfer	0603	Rhodes Owen L	004536	100,352	94,331	50,352	47,331
May 24, 2016	June 1, 2016	MDVA-Lanco	No	Issue	0603	Dean & Sheldon Wenger T/A Spring Creek Farm	005272	0	0	50,000	47,000
May 31, 2016	June 1, 2016	DFA SE	No	Total Transfer	0604	Beiler Allen T/A Mountain View	000095	67,680	63,619	0	0
May 31, 2016	June 1, 2016	DFA SE	Yes	Increase	0604	New Generation Dairy	005214	1,471,746	1,383,441	1,539,426	1,447,060
June 7, 2016	June 16, 2016	CMPA	Yes	Total Transfer	0605	Shank Lois E	003117	162,489	152,740	0	0
June 7, 2016	June 16, 2016	DFA SE	No	Increase	0605	Wenger Gerald S	004434	10,616	9,979	65,616	61,679
June 7, 2016	June 16, 2016	DFA SE	No	Issue	0605	Beiler Dairy Farm LLC	005273	0	0	5,625	5,288
June 7, 2016	June 16, 2016	DFA SE	Yes	Increase	0605	New Generation Dairy	005214	1,539,426	1,447,060	1,641,290	1,542,812

Virginia State Milk Commission
Base Assignment System
June 2016
CORRECTION Transfers #2, #3 & #5

	DFA SE	DFA NE	MDVA	CMPA	Land O'Lakes	Cumberland Valley	Mt. Joy			Established Base Total
Established 3-month Base	27,855,467	463,002	23,871,069	14,448,018	802,967	250,631	236,422			67,927,576
Corrected 3-month Base	27,837,837	463,002	23,965,069	14,371,648	802,967	250,631	236,422			67,927,576

Order	Distributor	DFA SE	DFA NE	MDVA	CMPA	Land O'Lakes	Cumberland Valley	Mt. Joy		Total Base Assignment
5	Borden Dairy KY			387,415						387,415
33	Broughton Foods	159,791								159,791
1	Cloverland Farms Dairy			3,359,058			245,183			3,604,241
1	Crowley Foods	601,833								601,833
1	Cumberland Dairy					224,633				224,633
5	Dairy Fresh	2,958,974		467,053	2,824,444					6,250,472
5	Harris Teeter				909,989					909,989
5	Homestead Creamery				407,340					407,340
1	HP Hood			1,376,266		200,000				1,576,266
5	Land-O-Sun Spartanburg			477,924						477,924
1	Marva Maid Landover			501,475						501,475
VA	Marva Maid Newport News	3,451,436		2,532,958	1,752,698					7,737,093
5	Mayfield			2,790,807						2,790,807
5	Milkco			2,026,356						2,026,356
33	Nestle	388,855								388,855
5	PET Richmond	4,867,900		4,821,080	8,164,751					17,853,731
VA	Potomac Farms			389,708						389,708
7	Saputo Dairy KY	298,985								298,985
1	Saputo Foods NY	407,227								407,227
33	Superior Dairy	1,187,091								1,187,091
1	Swiss Premium Dairy			2,747,396						2,747,396
1	Tuscan Lehigh Dairies	9,950	452,936			360,878		231,283		1,055,047
33	United Dairy	5,325,361								5,325,361
1	Upstate Niagara			172,894						172,894
1	Wawa Dairy			388,627						388,627
5	Westover Dairy	7,528,765								7,528,765
5	White Wave Mt. Crawford			1,005,073						1,005,073
5	Winchester Farms	46,498								46,498
TOTAL		27,232,667	452,936	23,444,089	14,059,221	785,511	245,183	231,283		66,450,890

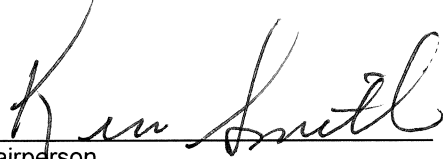
3-month Base Minus Total					(0)					(0)
---------------------------------	--	--	--	--	------------	--	--	--	--	------------

**Virginia State Milk Commission
Base Assignment System
June 2016**

Virginia Base				
Base Assignable to Virginia Plants:	8,126,801	Percentage of Base Assignable to Virginia Plants:		12.195526%
	DFA	MDVA	CMPA	TOTAL
Assignable Base:	28,300,839	23,965,069	14,371,648	66,637,556
Virginia Plant Base Assignment:	3,451,436	2,922,666	1,752,698	8,126,801
Virginia Plants	DFA	MDVA	CMPA	
Marva Maid Newport News:	3,451,436	2,532,958	1,752,698	7,737,093
PET Richmond				
Potomac Farms		389,708		389,708
White Wave Mt. Crawford				
Total	3,451,436	2,922,666	1,752,698	8,126,801

	DFA	MDVA	CMPA	Land O'Lakes	Cumberland Valley	Mt. Joy	Independent
Base Assigned to Virginia Plants:	3,451,436	2,922,666	1,752,698				
Percent of Total Base Assigned to Virginia Plants (%):	12.47%	12.47%	12.47%				
Base Assigned to Fully Regulated Federal Order Plants:	24,234,167	20,521,423	12,306,523	785,511	245,183	231,283	
Percent of Total Base Assigned to Federal Order Plants (%):	87.53%	87.53%	87.53%	100.00%	100.00%	100.00%	
Total Base Assigned:	27,685,603	23,444,089	14,059,221	785,511	245,183	231,283	
Assigned Base (From Base worksheet):	27,685,603	23,444,089	14,059,221	785,511	245,183	231,283	
Variance (Total Base Assigned - Assigned Base):	0						
Base Assigned to Federal Order 1 (%):	5.32%	36.45%		100.00%	100.00%	100.00%	
Base Assigned to Federal Order 5 (%):	55.63%	51.08%	87.53%				
Base Assigned to Federal Order 7 (%):	1.08%						
Base Assigned to Federal Order 33 (%):	25.50%						
Total Base Assigned to Federal Order Plants (%):	87.53%	87.53%	87.53%	100.00%	100.00%	100.00%	

The next Commission meeting date was scheduled for September 21, 2016 at 1:30 p.m., at the Virginia Department of Forestry in Charlottesville, VA 22903.



Chairperson



Administrator